

PUBLIC RIGHTS OF WAY ADA TRANSITION PLAN

CITY OF MORRIS, MINNESOTA

City of Morris Council Acceptance Date: Month DD, YYYY



Prepared by **WIDSETH**
Widseth.com

Draft Print

03/23/2021 3:29:57 PM

TABLE OF CONTENTS

Table of Contents.....	1
EXECUTIVE SUMMARY	4
Transition Plan Need and Purpose.....	4
Schedule.....	4
ADA Coordinator	5
Implementation Schedule.....	5
Methodology.....	5
Grievance Procedure	5
Progress Monitoring	5
Self-Evaluation Results.....	6
Schedule / Budget Information.....	6
Cost Information.....	6
Unit Prices	6
Improvement Cost	6
Entire Jurisdiction.....	6
Contact Information.....	7
ADA Title II Coordinator	7
City Engineer	7
Introduction	8
Transition Plan Need and Purpose.....	8
ADA and its Relationship to Other Laws	8
Agency Requirements.....	8
ADA Requirements.....	9
Pedestrian Routes	9
Curb Ramps	10
Pedestrian Traffic Signals	11
Self-Evaluation	13
Overview	13
Summary	13
Policies and Practices.....	13

Previous Practices	13
Policy	13
Improvement Schedule.....	14
Priority Areas	14
External Agency Coordination	14
Schedule.....	14
ADA Coordinator	14
Implementation Schedule.....	14
Methodology.....	14
Public Outreach.....	15
Grievance Procedure	15
Progress Monitoring	15
Appendices.....	16
A. Self-Evaluation Results.....	16
B. Schedule / Budget Information.....	16
C. Public Outreach.....	16
D. Grievance Procedure.....	16
E. Contact Information.....	16
F. Agency ADA Design Standards and Procedures.....	16
G. Glossary of Terms.....	16
H. Maps.....	16
Appendix A – Self-Evaluation Results	17
Sidewalks.....	17
Curb Ramps	27
Pedestrian Signals	43
Appendix B – Schedule / Budget Information	45
Cost Information	45
Unit Prices	45
Improvement Cost	45
Entire Jurisdiction.....	45
Appendix C – Public Outreach.....	46
Appendix D – Grievance Procedure	47
Public Notice	47

Appendix E – Contact Information.....	50
ADA Title II Coordinator	50
Public Right of Ways ADA Implementation Coordinator	50
City Engineer	50
Appendix F – Agency ADA Design Standards and Procedures.....	51
Design Procedures	51
Intersection Corners	51
Sidewalks / Trails.....	51
Traffic Control Signals	51
Other policies, practices and programs	51
Design Standards	51
Appendix G – Glossary of Terms	52

EXECUTIVE SUMMARY

TRANSITION PLAN NEED AND PURPOSE

The Federal Highway Administration (FHWA) has enacted a requirement that all local agencies with greater than 50 employees or who are slated to receive federal funding included in the 2021-2024 Transportation Improvement Plan (TIP) must develop and adopt an ADA Transition Plan or be substantially working towards completion of the plan. If the local agency does not have their Transition Plan completed or in progress, the agency risks losing federal funding for transportation projects.

Each agency is required to complete a self-evaluation/survey of its facilities, policies and practices as it relates to the requirements set forth in The Americans with Disabilities Act (ADA). Repair or replacement of deficient facilities must be noted and addressed in a formal transition plan.

In September of 2019, the City of Morris conducted an inventory of pedestrian facilities within its public right of way consisting of the evaluation of the following facilities:

- 23.6 miles of sidewalks/trails
- 629 curb ramps
- 16 traffic control signals (by leg)

The City evaluated their facilities on a 1-4 rating system to separate out various severities of non-compliance allowing the City to better prioritize ramp replacement.

1. Excellent condition, fully compliant
2. Good condition and/or few criteria non-compliant
3. Fair condition and/or some criteria non-compliant
4. Poor condition and/or many criteria non-compliant

Requests for accessibility improvements can be submitted to the City Manager.

The City has identified specific locations as priority areas for planned accessibility improvement projects. These areas have been selected based on their poor condition and the receipt of public comments. There is a stand alone sidewalk project planned for 2021 that begins repairing the most poorly rated sidewalks and ramps in the City.

Other agencies are responsible for pedestrian facilities within the jurisdiction of the City. The City will coordinate with those agencies to track and assist in the facilitation of the elimination of accessibility barriers along their routes.

SCHEDULE

The City of Morris has set the following schedule goals for improving the accessibility of its pedestrian facilities within the City jurisdiction:

- After 10 years, 80% of accessibility features within the priority areas identified by City staff would be ADA compliant.

- After 20 years, 80% of accessibility features within the jurisdiction of City would be ADA compliant.

ADA COORDINATOR

The City has identified an ADA Title II Coordinator to oversee the City policies and procedures. See the Appendix E – Contact Information.

IMPLEMENTATION SCHEDULE

METHODOLOGY

The City will utilize two methods for upgrading pedestrian facilities to the current ADA standards. The first and most comprehensive of the two methods are the scheduled street and utility improvement projects. All pedestrian facilities impacted by these projects will be upgraded to current ADA accessibility standards. High priority areas such as those near specific land uses like schools, government offices, and medical facilities, will be given additional consideration. The second method is the stand alone sidewalk and ADA accessibility improvement projects. These projects will be incorporated into the Capital Improvement Program (CIP) on a case by case basis as determined by the City.

GRIEVANCE PROCEDURE

If users of the City facilities and services believe the City has not provided reasonable accommodation, they have the right to file a grievance.

The City has developed a grievance procedure for the purpose of the prompt and equitable resolution of citizens' complaints, concerns, comments, and other grievances. This grievance procedure is outlined in Appendix D.

PROGRESS MONITORING

The City's transition plan is a living document that will receive routine updates. Improvements due to new projects will be documented and this plan will be updated to reflect these changes. This Transition Plan is available to the public continually through the City's website.

SELF-EVALUATION RESULTS

This initial self-evaluation of pedestrian facilities yielded the following results:

- 5.3% of sidewalks/trails (by length) met accessibility criteria
- 28.3% of necessary curb ramp locations met accessibility criteria
- 88% of traffic control signals were compliant

SCHEDULE / BUDGET INFORMATION

COST INFORMATION

UNIT PRICES

Construction costs for upgrading facilities can vary depending on each individual improvement and conditions of each site. Costs can also vary on the type and size of project the improvements are associated with. Listed below are representative 2020 costs for some typical accessibility improvements based on if the improvements are included as part of a retrofit type project, or as part of a larger comprehensive capital improvement project.

Intersection corner ADA improvement retrofit: +/- \$3,000 per ramp

Traffic control signal APS upgrade retrofit: +/- \$ 7,500 per signal leg

Sidewalk / Trail ADA improvement retrofit: +/- \$5.00 per SF

IMPROVEMENT COST

Reconstruct 451 pedestrian ramps:	\$1,353,000
Traffic control signal APS upgrades:	\$15,000
Sidewalk / Trail ADA improvement retrofit (SF):	\$3,184,431
Total:	\$4,552,431

ENTIRE JURISDICTION

Based on the results of the self-evaluation, the estimated costs associated with providing ADA accessibility within the entire jurisdiction is \$4,552,431 regardless of responsible authority. This amount signifies a significant investment that the City of Morris is committed to making in the upcoming years with the assistance of other responsible agencies where applicable. A systematic approach to providing accessibility will be taken in order to absorb the cost into the City budget for improvements to the public right of way.

CONTACT INFORMATION

ADA TITLE II COORDINATOR

Name: Blaine Hill

Address: 609 Oregon Avenue

PO Box 438

Morris, MN 56267

Phone: 320-589-3141

E-mail: bhill@ci.morris.mn.us

CITY ENGINEER

Name: Jeff Kuhn, PE

Address: 610 Fillmore Street

Alexandria, MN 56308

Phone: 320-762-8149

E-mail: Jeff.Kuhn@wsn.us.com

INTRODUCTION

TRANSITION PLAN NEED AND PURPOSE

The Americans with Disabilities Act (ADA), enacted on July 26, 1990, is a civil rights law prohibiting discrimination against individuals on the basis of disability. ADA consists of five titles outlining protections in the following areas:

1. Employment
2. State and local government services
3. Public accommodations
4. Telecommunications
5. Miscellaneous Provisions

Title II of ADA pertains to the programs, activities and services public entities provide. As a provider of public transportation services and programs, The City of Morris must comply with this section of the Act as it specifically applies to public service agencies. Title II of ADA provides that, “...no qualified individual with a disability shall, by reason of such disability, be excluded from participation in or be denied the benefits of the services, programs, or activities of a public entity, or be subjected to discrimination by any such entity.” ([42 USC. Sec. 12132](#); [28 CFR. Sec. 35.130](#))

As required by Title II of [ADA, 28 CFR. Part 35 Sec. 35.105 and Sec. 35.150](#), The City of Morris has conducted a self-evaluation of its facilities within public rights of way and has developed this Transition Plan detailing how the organization will ensure that all of those facilities are accessible to all individuals. This document serves as a supplement to the City’s existing Transition Plan covering buildings, services, programs and activities.

ADA AND ITS RELATIONSHIP TO OTHER LAWS

Title II of ADA is companion legislation to two previous federal statutes and regulations: the [Architectural Barriers Acts of 1968](#) and [Section 504 of the Rehabilitation Act](#) of 1973.

The Architectural Barriers Act of 1968 is a Federal law that requires facilities designed, built, altered or leased with Federal funds to be accessible. The Architectural Barriers Act marks one of the first efforts to ensure access to the built environment.

Section 504 of the Rehabilitation Act of 1973 is a Federal law that protects qualified individuals from discrimination based on their disability. The nondiscrimination requirements of the law apply to employers and organizations that receive financial assistance from any Federal department or City. Title II of ADA extended this coverage to all state and local government entities, regardless of whether they receive federal funding or not.

AGENCY REQUIREMENTS

Under Title II, The City of Morris must meet these general requirements:

- Must operate their programs so that, when viewed in their entirety, the programs are accessible to and useable by individuals with disabilities ([28 C.F.R. Sec. 35.150](#)).
- May not refuse to allow a person with a disability to participate in a service, program or activity simply because the person has a disability ([28 C.F.R. Sec. 35.130 \(a\)](#)).

- Must make reasonable modifications in policies, practices and procedures that deny equal access to individuals with disabilities unless a fundamental alteration in the program would result [\(28 C.F.R. Sec. 35.130\(b\) \(7\)\)](#).
- May not provide services or benefits to individuals with disabilities through programs that are separate or different unless the separate or different measures are necessary to ensure that benefits and services are equally effective [\(28 C.F.R. Sec. 35.130\(b\)\(iv\) & \(d\)\)](#).
- Must take appropriate steps to ensure that communications with applicants, participants and members of the public with disabilities are as effective as communications with others [\(29 C.F.R. Sec. 35.160\(a\)\)](#).
- Must designate at least one responsible employee to coordinate ADA compliance [\[28 CFR Sec. 35.107\(a\)\]](#). This person is often referred to as the "ADA Coordinator." The public entity must provide the ADA coordinator's name, office address, and telephone number to all interested individuals [\[28 CFR Sec. 35.107\(a\)\]](#).
- Must provide notice of ADA requirements. All public entities, regardless of size, must provide information about the rights and protections of Title II to applicants, participants, beneficiaries, employees, and other interested persons [\[28 CFR Sec. 35.106\]](#). The notice must include the identification of the employee serving as the ADA coordinator and must provide this information on an ongoing basis [\[28 CFR Sec. 104.8\(a\)\]](#).
- Must establish a grievance procedure. Public entities must adopt and publish grievance procedures providing for prompt and equitable resolution of complaints [\[28 CFR Sec. 35.107\(b\)\]](#). This requirement provides for a timely resolution of all problems or conflicts related to ADA compliance before they escalate to litigation and/or the federal complaint process.

This document has been created to specifically cover accessibility within the public rights of way and does not include information on City programs, practices, or building facilities not related to public rights of way.

ADA REQUIREMENTS

According to the 2010 ADA Standards for Accessible Design and the 2011 Proposed Guidelines for Pedestrian Facilities in the Public Right-of-Way (PROWAG) the following key design elements are required:

PEDESTRIAN ROUTES

- Access ways must be continuous with interconnected walkways, sidewalks, curb ramps, landings and crosswalks.
- Routes shall be firm, stable and slip resistant.
- Access ways shall have a 48" minimum clear width.
- If there is less than 5 feet clear width, there must be passing spaces dimensioned 5 feet by 5 feet minimum at least every 200 feet.
- Maximum 5% running slope (parallel to direction of travel) and 2% cross slope (perpendicular to direction of travel).
- Vertical discontinuities must be no more than ¼ inch.
- Horizontal openings in gratings and joints shall not permit passage of a sphere more than 13 mm (0.5 in) in diameter.

-
- Elongated openings in gratings shall be placed so that the long dimension is perpendicular to the dominant direction of travel.



FIGURE 1 NON COMPLIANT SIDEWALK IN MORRIS

CURB RAMPS

- Generally, curb ramps must be provided wherever a sidewalk or other pedestrian walkway crosses a curb.
- The ramp has the least running slope possible but must be 8.33% or less.
- The cross slope may not exceed 2%.
- The ramp must be at least 48 inches wide, not including the flared sides.
- The ramp must have detectable warnings at least 24 inches deep that extend the full width of the ramp.
 - Detectable warnings consist of a series of small domes that contrast in color with the surrounding sidewalk or street.
- Transitions from the ramp to the walkway, gutter and street must be flush and free of abrupt changes.

- Grade breaks at the top and bottom of curb ramp runs shall be perpendicular to the direction of the ramp run. Grade breaks shall not be permitted on the surface of ramp runs and turning spaces. Surface slopes that meet at grade breaks shall be flush.
- The gutter must have a slope of no more than 5 percent toward the ramp.
- Landing dimensions must be a minimum of 4 feet by 4 feet.
- Gratings, access covers, and other appurtenances shall not be located on curb ramps, landings or gutters.



FIGURE 2 NON COMPLIANT CURB RAMP IN MORRIS

PEDESTRIAN TRAFFIC SIGNALS

- Clear path must be at least 36 inches wide
- Push button mounting height is to be at least 15 inches and up to 48 inches
- Pedestrian push buttons must be located less than 5 feet from the crosswalk line that is farthest from the intersection
- Pedestrian push buttons must be between 1.5 and 10 feet from the edge of curb, shoulder, or pavement
- Accessible pedestrian signals (APS) shall face the intersection and be parallel to the crosswalk served
- Push buttons shall have locator tones for the DON'T WALK interval

- There must be audible indications during the WALK interval
- Refer to Part 4 of the Minnesota Manual of Uniform Traffic Control Devices (MnMUTCD) for complete details



FIGURE 3 APS IN MORRIS

SELF-EVALUATION

OVERVIEW

The City of Morris is required, under Title II of the Americans with Disabilities Act (ADA) and 28CFR35.105, to perform a self-evaluation of its current transportation infrastructure policies, practices, and programs. This self-evaluation will identify what policies and practices impact accessibility and examine how the City implements these policies. The goal of the self-evaluation is to verify that, in implementing the City's policies and practices, the department is providing accessibility and not adversely affecting the full participation of individuals with disabilities.

The self-evaluation also examines the condition of the City's Pedestrian Circulation Route/Pedestrian Access Route (PCR/PAR) and identifies potential need for PCR/PAR infrastructure improvements. This will include the sidewalks, curb ramps, bicycle/pedestrian trails, traffic control signals and transit facilities that are located within the City rights of way. Any barriers to accessibility identified in the self-evaluation and the remedy to the identified barrier are set out in this transition plan.

SUMMARY

In September 2019, The City of Morris conducted an inventory of pedestrian facilities within its public right of way consisting of the evaluation of the following facilities:

- 23.6 miles of sidewalks/trails
- 629 curb ramps
- 16 traffic control signals (by leg)

A detailed evaluation on how these facilities relate to ADA standards is found in Appendix A and will be updated periodically.

POLICIES AND PRACTICES

PREVIOUS PRACTICES

Since the adoption of the ADA, The City of Morris has striven to provide accessible pedestrian features as part of the City's capital improvement projects. As additional information was made available as to the methods of providing accessible pedestrian features, the City updated their procedures to accommodate these methods.

POLICY

Morris's goal is to continue to provide accessible pedestrian design features as part of the City capital improvement projects. The City has established ADA design standards and procedures as listed in Appendix F. These standards and procedures will be kept up to date with nationwide and local best management practices.

The City will consider and respond to all accessibility improvement requests. All accessibility improvements that have been deemed reasonable will be scheduled consistent with transportation priorities. The City will coordinate with external agencies to ensure that all new or altered pedestrian facilities within the City jurisdiction are ADA compliant to the maximum extent feasible.

Maintenance of pedestrian facilities within the public right of way will continue to follow the policies set forth by the City.

Requests for accessibility improvements can be submitted to the City of Morris Manager. Contact information for the City Manager is located in Appendix E.

IMPROVEMENT SCHEDULE

PRIORITY AREAS

The City of Morris has identified specific locations as priority areas for planned accessibility improvement projects. These areas have been selected due to their proximity to specific land uses such as schools, government offices and medical facilities, as well as from the receipt of public comments. There is a stand alone sidewalk project planned for 2021 that begins repairing the most poorly rated sidewalks and ramps in the City. In the meantime, to draw immediate attention to existing trip hazards among City sidewalks, vertical discontinuities were spray painted with bright pink paint and an inventory of these areas requiring spot repair was taken.

EXTERNAL AGENCY COORDINATION

Other agencies are responsible for pedestrian facilities within the jurisdiction of the City. The City will coordinate with those agencies to track and assist in the facilitation of the elimination of accessibility barriers along their routes.

SCHEDULE

The City of Morris has set the following schedule goals for improving the accessibility of its pedestrian facilities within the City jurisdiction:

- After 10 years, 80% of accessibility features within the priority areas identified by City staff would be ADA compliant.
- After 20 years, 80% of accessibility features within the jurisdiction of City would be ADA compliant.

ADA COORDINATOR

In accordance with 28 CFR 35.107(a), the City has identified an ADA Title II Coordinator to oversee the City policies and procedures. Contact information for this individual is located in Appendix E.

IMPLEMENTATION SCHEDULE

METHODOLOGY

The City will utilize two methods for upgrading pedestrian facilities to the current ADA standards. The first and most comprehensive of the two methods are the scheduled street and utility improvement projects. All pedestrian facilities impacted by these projects will be upgraded to current ADA accessibility standards. High priority areas such as those near specific land uses like schools, government offices, and medical facilities, will be given additional consideration. The second method is the stand

alone sidewalk and ADA accessibility improvement projects. These projects will be incorporated into the Capital Improvement Program (CIP) on a case by case basis as determined by the City.

PUBLIC OUTREACH

The City of Morris recognizes that public participation is an important component in the development of this document. Input from the community has been gathered and used to help define priority areas for improvements within the jurisdiction of The City of Morris.

Public outreach for the creation of this document consisted of the following activities:

A notice stating the availability of this report and requesting public comment was published in the local newspaper as well as posted on the City website.

This document was made available for public comment. A summary of comments received and detailed information regarding the public outreach activities are to be located in Appendix C.

GRIEVANCE PROCEDURE

Under the Americans with Disabilities Act, each agency is required to publish its responsibilities in regards to the ADA. A draft of this public notice is provided in Appendix D. If users of The City of Morris facilities and services believe the City has not provided reasonable accommodation, they have the right to file a grievance.

In accordance with 28 CFR 35.107(b), the City has developed a grievance procedure for the purpose of the prompt and equitable resolution of citizens' complaints, concerns, comments, and other grievances. This grievance procedure is outlined in Appendix D.

PROGRESS MONITORING

The City's transition plan is a living document that will receive routine updates. Improvements due to new projects will be documented and this plan will be updated to reflect these changes. This Transition Plan is available to the public continually through the City's website.

APPENDICES

- A. SELF-EVALUATION RESULTS
- B. SCHEDULE / BUDGET INFORMATION
- C. PUBLIC OUTREACH
- D. GRIEVANCE PROCEDURE
- E. CONTACT INFORMATION
- F. AGENCY ADA DESIGN STANDARDS AND PROCEDURES
- G. GLOSSARY OF TERMS
- H. MAPS

APPENDIX A – SELF-EVALUATION RESULTS

This initial self-evaluation of pedestrian facilities yielded the following results:

- 5.3% of sidewalks/trails (by length) met accessibility criteria
- 28.3% of necessary curb ramp locations met accessibility criteria
- 88% of traffic control signals were compliant

The City evaluated their facilities on a 1-4 rating system to separate out various severities of noncompliance allowing the City to better prioritize pedestrian facilities replacement.

1. Excellent condition, fully compliant
2. Good condition and/or few criteria non-compliant
3. Fair condition and/or some criteria non-compliant
4. Poor condition and/or many criteria non-compliant

SIDEWALKS

UID	Road Name	To	From	Street Side	Condition	Compliance	Width (FT)	Length (FT)
SW_001	W 11TH ST	PARK AVE	SCOTTS AVE	NORTH	4	N	5	1116
SW_002	W 8TH ST	PACIFIC AVE	NEVADA AVE	SOUTH	4	N	5	440
SW_003	OREGON AVE	E 3RD ST	E 4TH ST	EAST	1	Y	5	331
SW_004	PARK AVE	W 11TH ST	PARK LN	WEST	3	N	3.5	156
SW_005	PARK AVE	PARK LN	PARK LN	WEST	4	N	4	1105
SW_006	W 11TH ST	ALBANY AVE	SCOTTS AVE	SOUTH	4	N	3	352
SW_007	ALBANY AVE	W 10TH ST	W 11TH ST	WEST	4	N	3	400
SW_008	W 10TH ST	ALBANY AVE	SCOTTS AVE	NORTH	4	N	3	352
SW_009	W 10TH ST	ALBANY AVE	SCOTTS AVE	SOUTH	3	N	3	353
SW_010	W 10TH ST	POUGHKEEPSIE AVE	ALBANY AVE	SOUTH	4	N	5	257
SW_011	PARK AVE	W 10TH ST	W 11TH ST	WEST	3	N	5	400
SW_012	PARK AVE	8TH ST W	W 10TH ST	WEST	4	N	4	800
SW_013	WYOMING AVE	W 7TH ST	8TH ST W	WEST	4	N	5	468
SW_014	W 7TH ST	WYOMING AVE	LYNDALE AVE	NORTH	4	N	4	333
SW_015	LYNDALE AVE	W 7TH ST	8TH ST W	EAST	4	N	3	635
SW_016	LYNDALE AVE	W 6TH ST	8TH ST W	WEST	4	N	4	941
SW_017	MNTH 28	WYOMING AVE	LYNDALE AVE	SOUTH	2	N	5	313
SW_018	MNTH 28	WYOMING AVE	LYNDALE AVE	NORTH	4	N	4	230
SW_019	WYOMING AVE	MNTH 28	W 6TH ST	WEST	4	N	4	329
SW_020	W 7TH ST	WYOMING AVE	LYNDALE AVE	SOUTH	3	N	5	332

ADA Public Rights of Way Transition Plan –March 2021

SW_021	WYOMING AVE	W 6TH ST	W 7TH ST	WEST	2	N	5	339
SW_022	W 6TH ST	WYOMING AVE	LYNDALE AVE	NORTH	4	N	5	333
SW_023	MNTH 28	IDAHO AVE	WASHINGTON AVE	SOUTH	2	N	5	322
SW_024	MNTH 28	WASHINGTON AVE	WYOMING AVE	SOUTH	3	N	5	329
SW_025	MNTH 28	WASHINGTON AVE	WYOMING AVE	NORTH	4	N	5	332
SW_026	WASHINGTON AVE	MNTH 28	W 6TH ST	WEST	4	N	4	333
SW_027	W 6TH ST	WASHINGTON AVE	WYOMING AVE	SOUTH	4	N	5	337
SW_028	W 7TH ST	WASHINGTON AVE	WYOMING AVE	SOUTH	3	N	5	333
SW_029	WASHINGTON AVE	W 6TH ST	W 7TH ST	WEST	3	N	5	336
SW_030	W 6TH ST	WASHINGTON AVE	WYOMING AVE	NORTH	4	N	4	335
SW_031	W 8TH ST	WASHINGTON AVE	WYOMING AVE	SOUTH	4	N	4	336
SW_032	W 7TH ST	WASHINGTON AVE	WYOMING AVE	NORTH	3	N	5	330
SW_033	WASHINGTON AVE	W 7TH ST	W 8TH ST	WEST	4	N	5	339
SW_034	W 9TH ST	IDAHO AVE	PARK AVE	SOUTH	2	N	5	571
SW_035	IDAHO AVE	W 8TH ST	W 9TH ST	WEST	2	N	5	341
SW_036	W 8TH ST	IDAHO AVE	WYOMING AVE	NORTH	2	N	5	704
SW_037	W 10TH ST	IDAHO AVE	PARK AVE	SOUTH	2	N	5	294
SW_038	IDAHO AVE	W 9TH ST	W 10TH ST	WEST	2	N	5	341
SW_039	W 9TH ST	IDAHO AVE	PARK AVE	NORTH	2	N	5	521
SW_040	W 10TH ST	IDAHO AVE	PARK AVE	NORTH	2	N	5	242
SW_041	IDAHO AVE	W 10TH ST	W 11TH ST	WEST	2	N	5	333
SW_042	NEVADA AVE	W 11TH ST	PARK AVE	WEST	2	N	5	494
SW_043	NEVADA AVE	W 10TH ST	W 11TH ST	WEST	2	N	5	332
SW_044	W 10TH ST	NEVADA AVE	IDAHO AVE	NORTH	2	N	5	331
SW_045	IDAHO AVE	W 10TH ST	W 11TH ST	EAST	2	N	5	332
SW_046	NEVADA AVE	W 9TH ST	W 10TH ST	WEST	2	N	5	335
SW_047	W 10TH ST	NEVADA AVE	IDAHO AVE	SOUTH	2	N	5	333
SW_048	W 9TH ST	NEVADA AVE	IDAHO AVE	NORTH	2	N	5	334
SW_049	IDAHO AVE	W 9TH ST	W 10TH ST	EAST	2	N	5	337
SW_050	W 9TH ST	NEVADA AVE	IDAHO AVE	SOUTH	2	N	5	338
SW_051	NEVADA AVE	W 8TH ST	W 9TH AVE	WEST	2	Y	5	332
SW_052	W 8TH ST	NEVADA AVE	IDAHO AVE	NORTH	2	N	5	335

ADA Public Rights of Way Transition Plan –March 2021

SW_053	IDAHO AVE	W 8TH ST	W 9TH ST	EAST	3	N	5	338
SW_054	W 8TH ST	NEVADA AVE	IDAHO AVE	SOUTH	2	N	5	337
SW_055	W 7TH ST	NEVADA AVE	IDAHO AVE	NORTH	3	N	5	339
SW_056	IDAHO AVE	W 7TH ST	W 8T ST	WEST	3	N	5	343
SW_057	W 7TH ST	IDAHO AVE	WASHINGTON AVE	NORTH	2	N	5	342
SW_058	W 8TH ST	IDAHO AVE	WASHINGTON AVE	SOUTH	2	N	5	338
SW_059	W 7TH ST	IDAHO AVE	WASHINGTON AVE	SOUTH	3	N	5	341
SW_060	IDAHO AVE	W 6TH ST	W 7TH ST	WEST	4	N	5	338
SW_061	W 6TH ST	IDAHO AVE	WASHINGTON AVE	NORTH	4	N	4	337
SW_062	W 6TH ST	IDAHO AVE	WASHINGTON AVE	SOUTH	3	N	4	340
SW_063	WASHINGTON AVE	MNTH 28	W 6TH ST	EAST	3	N	5	306
SW_064	MNTH 28	IDAHO AVE	WASHINGTON AVE	NORTH	3	N	5	329
SW_065	IDAHO AVE	MNTH 28	W 6TH ST	WEST	3	N	5	149
SW_066	NEVADA AVE	W 4TH ST	MNTH 28	WEST	2	N	5	130
SW_067	MNTH 28	NEVADA AVE	IDAHO AVE	SOUTH	2	N	5	327
SW_068	MNTH 28	NEVADA AVE	IDAHO AVE	NORTH	4	N	4	322
SW_069	IDAHO AVE	MNTH 28	W 6TH ST	EAST	1	Y	5	64
SW_070	W 6TH ST	NEVADA AVE	IDAHO AVE	SOUTH	3	N	4	332
SW_071	W 7TH ST	NEVADA AVE	IDAHO AVE	SOUTH	2	N	5	329
SW_072	W 6TH ST	NEVADA AVE	IDAHO AVE	NORTH	3	N	4	333
SW_073	PACIFIC AVE	W 10TH ST	W 11TH ST	WEST	2	N	5.5	325
SW_074	W 10TH ST	PACIFIC AVE	NEVADA AVE	NORTH	3	N	5	437
SW_075	NEVADA AVE	W 10TH ST	W 11TH ST	EAST	2	N	5	336
SW_076	W 10TH ST	PACIFIC AVE	NEVADA AVE	SOUTH	2	N	5	427
SW_077	PACIFIC AVE	W 9TH ST	W 10TH ST	WEST	3	N	5.5	327
SW_078	W 9TH ST	PACIFIC AVE	NEVADA AVE	NORTH	2	N	5	438
SW_079	NEVADA AVE	W 9TH ST	W 10TH ST	EAST	3	N	5	334
SW_080	NEVADA AVE	W 8TH ST	W 9TH ST	EAST	2	N	5	341
SW_081	W 8TH ST	PACIFIC AVE	NEVADA AVE	NORTH	2	N	6	442
SW_082	PACIFIC AVE	W 8TH ST	W 9TH ST	WEST	2	N	5.5	332
SW_083	W 9TH ST	PACIFIC AVE	NEVADA AVE	SOUTH	2	N	5	439
SW_084	NEVADA AVE	W 7TH ST	W 8TH ST	EAST	4	N	4	322
SW_085	W 7TH ST	PACIFIC AVE	NEVADA AVE	NORTH	3	N	5	440
SW_086	PACIFIC AVE	W 7TH ST	W 8TH ST	WEST	3	N	5	318
SW_087	W 7TH ST	PACIFIC AVE	NEVADA AVE	SOUTH	3	N	5	440

ADA Public Rights of Way Transition Plan –March 2021

SW_088	NEVADA AVE	W 6TH ST	W 7TH ST	EAST	3	N	4	334
SW_089	W 6TH ST	PACIFIC AVE	NEVADA AVE	NORTH	2	N	5	439
SW_090	PACIFIC AVE	W 6TH ST	W 7TH ST	WEST	3	N	4	319
SW_091	W 6TH ST	PACIFIC AVE	NEVADA AVE	SOUTH	3	N	5	443
SW_092	NEVADA AVE	MNTH 28	W 6TH ST	EAST	3	N	5	328
SW_093	MNTH 28	PACIFIC AVE	NEVADA AVE	NORTH	3	N	5	439
SW_094	PACIFIC AVE	MNTH 28	W 6TH ST	WEST	2	N	4	305
SW_095	MNTH 28	PACIFIC AVE	NEVADA AVE	SOUTH	3	N	5	438
SW_096	NEVADA AVE	W 4TH ST	MNTH 28	EAST	2	N	5	330
SW_097	PACIFIC AVE	W 4TH ST	MNTH 28	WEST	4	N	4	320
SW_098	CSAH 22	END OF SIDEWALK	PACIFIC AVE	EAST	2	N	5	1097
SW_099	ATLANTIC AVE	E 7TH ST	E 10TH ST	WEST	2	N	10	1085
SW_100	ATLANTIC AVE	E 6TH ST	E 7TH ST	WEST	2	Y	10	306
SW_101	ATLANTIC AVE	E 5TH ST	E 6TH ST	WEST	1	Y	10	318
SW_102	ATLANTIC AVE	E 4TH ST	E 5TH ST	WEST	1	Y	10	1445
SW_103	ATLANTIC AVE	E 8TH ST	E 10TH ST	EAST	2	N	10	683
SW_104	E 8TH ST	ALLEY	ATLANTIC AVE	NORTH	3	N	5	145
SW_105	E 8TH ST	OREGON AVE	ALLEY	NORTH	2	N	5	265
SW_106	E 9TH ST	OREGON AVE	END OF SIDEWALK	NORTH	4	N	5	272
SW_107	E 8TH ST	OREGONA AVE	ATLANTIC AVE	SOUTH	3	N	10	141
SW_108	ATLANTIC AVE	E 7TH ST	E 8TH ST	EAST	1	N	10	311
SW_109	E 7TH ST	OREGON AVE	ATLANTIC AVE	NORTH	2	N	9	438
SW_110	E 7TH ST	OREGON AVE	ATLANTIC AVE	SOUTH	2	N	9	444
SW_111	ATLANTIC AVE	E 6TH ST	E 7TH ST	EAST	2	Y	9	312
SW_112	E 6TH ST	OREGON AVE	ATLANTIC AVE	NORTH	2	N	8	440
SW_113	OREGON AVE	E 6TH ST	E 7TH ST	WEST	2	N	12	307
SW_114	E 6TH ST	OREGON AVE	ATLANTIC AVE	SOUTH	2	N	12	435
SW_115	ATLANTIC AVE	E 5TH ST	E 6TH ST	EAST	1	Y	10	317
SW_116	E 5TH ST	OREGON AVE	ATLANTIC AVE	NORTH	2	N	9	435
SW_117	OREGON AVE	E 5THS T	E 6TH ST	WEST	2	N	9	313
SW_118	E 5TH ST	OREGON AVE	ATLANTIC ACE	SOUTH	2	N	9	438
SW_119	ATLANTIC AVE	E 1ST S	E 5TH ST	EAST	2	N	10	305
SW_120	E 4TH ST	OREGON AVE	ATLANTIC AVE	NORTH	2	N	5	441
SW_121	E 4TH ST	OREGON AVE	ATLANTIC AVE	SOUTH	2	N	5	443
SW_122	ATLANTIC AVE	E 3RD ST	E 4TH ST	EAST	2	N	10	308
SW_123	E 3RD ST	OREGON AVE	ATLANTIC AVE	NORTH	3	N	5	445
SW_124	E 3RD ST	OREGON AVE	ATLANTIC AVE	SOUTH	3	N	5	436

SW_125	ATLANTIC AVE	2ND ST E	E 3RD ST	EAST	2	N	10	328
SW_126	2ND ST E	OREGON AVE	ATLANTIC AVE	NORTH	2	N	5	446
SW_127	2ND ST E	OREGON AVE	ATLANTIC AVE	SOUTH	2	N	5	443
SW_128	ATLANTIC AVE	E 1ST ST	2ND ST E	EAST	2	N	10	318
SW_129	E 1ST ST	OREGON AVE	ATLANTIC AVE	NORTH	3	N	5	442
SW_130	E 1ST ST	OREGON AVE	ATLANTIC AVE	SOUTH	3	N	5	461
SW_131	SOUTH ST	OREGON AVE	ATLANTIC AVE	NORTH	3	N	5	501
SW_132	SOUTH ST	OREGON AVE	ATLANTIC AVE	SOUTH	4	N	5	334
SW_133	OREGON AVE	ELM ST	PINE ST	WEST	1	Y	5	629
SW_134	CALIFORNIA AVE	ELM ST	PINE ST	WEST	2	N	4	628
SW_135	OREGON AVE	PINE ST	SOUTH ST	WEST	1	N	5	762
SW_136	SOUTH ST	CALIFORNIA AVE	OREGON AVE	SOUTH	4	N	5	323
SW_137	CALIFORNIA AVE	PINE ST	SOUTH ST	WEST	4	N	3	643
SW_138	CALIFORNIA AVE	MEADOW LN	SOUTH ST	EAST	3	N	4	296
SW_139	CALIFORNIA AVE	GLENDALE ST	MEADOW LN	EAST	2	N	4	574
SW_140	CALIFORNIA AVE	ELM ST	GLENDALE ST	EAST	2	N	4	405
SW_141	MEADOW LN	ELM ST	GLENDALE ST	WEST	3	N	4	312
SW_142	MEADOW LN	GLENDALE ST	CALIFORNIA AVE	WEST	2	N	4	759
SW_143	GLENDALE ST	MEADOW LN	CALIFORNIA AVE	NORTH	2	N	4	253
SW_144	MEADOW LN	RIDGE RD	CALIFORNIA AVE	NORTH	3	N	3	414
SW_145	RIDGE RD	ELM ST	MEADOW LN	EAST	3	N	3	1407
SW_146	RIDGE RD	ELM ST	MEADOW LN	WEST	3	N	3	1100
SW_147	MEADOW LN	ELM ST	RIDGE RD	EAST	3	N	4	731
SW_148	SOUTH ST	CALIFORNIA AVE	OREGON AVE	NORTH	4	N	5	314
SW_149	E 1ST ST	CALIFORNIA AVE	OREGON AVE	SOUTH	3	N	5	328
SW_150	OREGON AVE	SOUTH ST	E 1ST ST	EAST	2	Y	5	320
SW_151	OREGON AVE	E 1ST ST	2ND ST E	EAST	1	Y	5	329
SW_152	E 1ST ST	CALIFORNIA AVE	OREGON AVE	NORTH	4	N	4	331
SW_153	CALIFORNIA AVE	1ST ST E	2ND ST E	WEST	4	N	5	324
SW_154	2ND ST E	CALIFORNIA AVE	OREGON AVE	SOUTH	2	N	5	326
SW_155	OREGON AVE	2ND ST E	E 3RD ST	EAST	1	Y	5	353
SW_156	2ND ST E	CALIFORNIA AVE	OREGON AVE	NORTH	2	N	5	333

SW_157	E 3RD ST	CALIFORNIA AVE	OREGON AVE	SOUTH	4	N	5	330
SW_158	E 3RD ST	CALIFORNIA AVE	OREGON AVE	NORTH	2	N	5	332
SW_159	E 4TH ST	CALIFORNIA AVE	OREGON AVE	SOUTH	2	N	5	323
SW_160	E 5TH ST	CALIFORNIA AVE	OREGON AVE	SOUTH	3	N	5	326
SW_161	OREGON AVE	E 4TH ST	E 5TH ST	EAST	2	N	5	336
SW_162	E 4TH ST	CALIFORNIA AVE	OREGON AVE	NORTH	2	N	5	327
SW_163	E 6TH ST	CALIFORNIA AVE	OREGON AVE	SOUTH	2	N	5	325
SW_164	OREGON AVE	E 5TH ST	E 6TH ST	EAST	2	N	5	332
SW_165	E 5TH ST	CALIFORNIA AVE	OREGON AVE	NORTH	3	N	5	323
SW_166	E 7TH ST	CALIFORNIA AVE	OREGON AVE	SOUTH	3	N	5	326
SW_167	OREGON AVE	E 6TH ST	E 7TH ST	EAST	2	N	9	307
SW_168	E 6TH ST	CALIFORNIA AVE	OREGON AVE	NORTH	3	N	6	328
SW_169	E 8TH ST	CALIFORNIA AVE	OREGON AVE	SOUTH	2	N	5	337
SW_170	OREGON AVE	E 7TH ST	E 8TH ST	EAST	3	N	5	335
SW_171	E 7TH ST	CALIFORNIA AVE	OREGON AVE	NORTH	4	N	5	331
SW_172	E 9TH ST	CALIFORNIA AVE	OREGON AVE	SOUTH	2	N	5	340
SW_173	OREGON AVE	E 8TH ST	E 9TH ST	EAST	3	N	5	339
SW_174	E 8TH ST	CALIFORNIA AVE	OREGON AVE	NORTH	4	N	5	334
SW_175	E 9TH ST	CALIFORNIA AVE	OREGON AVE	NORTH	3	N	5	338
SW_176	E 9TH ST	MONTANA AVE	E COLORADO AVE	NORTH	4	N	4	335
SW_177	E 9TH ST	E COLORADO AVE	CALIFORNIA AVE	NORTH	3	N	5	337
SW_178	CALIFORNIA AVE	E 8TH ST	E 9TH ST	EAST	4	N	4	171
SW_179	E 8TH ST	E COLORADO AVE	CALIFORNIA AVE	NORTH	3	N	5	330
SW_180	E 9TH ST	E COLORADO AVE	CALIFORNIA AVE	SOUTH	3	N	5	339
SW_181	E 8TH ST	E COLORADE AVE	CALIFORNIA AVE	SOUTH	1	Y	5	337
SW_182	CALIFORNIA AVE	E 7TH ST	E 8TH ST	EAST	1	Y	5	337

SW_183	E 7TH ST	E COLORADO AVE	CALIFORNIA AVE	NORTH	3	N	5	341
SW_184	COLUMBIA AVE	E 7TH ST	E 8TH ST	WEST	3	N	5	327
SW_185	E 7TH ST	E COLORADO AVE	CALIFORNIA AVE	SOUTH	3	N	5	333
SW_186	CALIFORNIA AVE	E 6TH ST	E 7TH ST	EAST	3	N	5	332
SW_187	E 6TH ST	COLORADO AVE	CALIFORNIA AVE	NORTH	3	N	5	334
SW_188	COLUMBIA AVE	E 6TH ST	E 7TH ST	WEST	3	N	5	325
SW_189	E 6TH ST	COLORADO AVE	CALIFORNIA AVE	SOUTH	3	N	5	336
SW_190	COLUMBIA AVE	E 5TH ST	E 6TH ST	WEST	4	N	4	336
SW_191	E 5TH ST	COLORADO AVE	CALIFORNIA AVE	NORTH	2	N	5	337
SW_192	CALIFORNIA AVE	E 5TH ST	E 6TH ST	EAST	3	N	5	329
SW_193	E 5TH ST	COLORADO AVE	CALIFORNIA AVE	SOUTH	2	N	5.5	264
SW_194	E 4TH ST	COLORADO AVE	CALIFORNIA AVE	NORTH	2	N	5	330
SW_195	CALIFORNIA AVE	E 4TH ST	E 5TH ST	EAST	3	N	5	334
SW_196	E 4TH ST	MONTANA AVE	COLORADO AVE	NORTH	2	N	5	323
SW_197	MONTANA AVE	E 4TH ST	E 5TH ST	WEST	2	N	5	331
SW_198	E 5TH ST	MONTANA VAE	COLORADO AVE	SOUTH	2	N	5	400
SW_199	CALIFORNIA AVE	E 3RD ST	E 4TH ST	EAST	2	N	5	332
SW_200	E 3RD ST	COLORADO AVE	CALIFORNIA AVE	NORTH	2	N	5	333
SW_201	COLUMBIA AVE	E 3RD ST	E 4TH ST	WEST	2	N	5	332
SW_202	E 4TH ST	COLORADO AVE	CALIFORNIA AVE	SOUTH	2	N	5	327
SW_203	COLUMBIA AVE	2ND ST E	E 3RD ST	WEST	3	N	5	318
SW_204	E 3RD ST	COLORADO AVE	CALIFORNIA AVE	SOUTH	3	N	5	329
SW_205	CALIFORNIA AVE	2ND ST E	E 3RD ST	EAST	3	N	5	329
SW_206	2ND ST E	COLORADO AVE	CALIFORNIA AVE	NORTH	2	N	5	330
SW_207	2ND ST E	COLORADO AVE	CALIFORNIA AVE	SOUTH	2	N	5	331
SW_208	CALIFORNIA AVE	1ST ST E	2ND ST E	EAST	2	N	5	328
SW_209	E 1ST ST	COLORADO AVE	CALIFORNIA AVE	NORTH	2	N	5	328
SW_210	E 1ST ST	COLORADO AVE	CALIFORNIA AVE	SOUTH	3	N	5	335

SW_211	SOUTH ST	COLORADO AVE	CALIFORNIA AVE	NORTH	3	N	5	325
SW_212	SOUTH ST	COLORADO AVE	CALIFORNIA AVE	SOUTH	2	N	5	333
SW_213	SOUTH ST	S COLUMBIA AVE	COLORADO AVE	SOUTH	2	N	5	381
SW_214	E 1ST ST	COLUMBIA AVE	COLORADO AVE	SOUTH	2	N	5	715
SW_215	SOUTH ST	SOUTH COLUMBIA AVE	COLORADO AVE	NORTH	1	Y	5	696
SW_216	2ND ST E	MONTANA AVE	COLORADO AVE	SOUTH	2	N	5	325
SW_217	COLUMBIA AVE	E 1ST ST	2ND ST E	EAST	2	N	5	330
SW_218	E 1ST ST	MONTANA AVE	COLORADO AVE	NORTH	4	N	5	327
SW_219	E 3RD ST	MONTANA AVE	COLORADO AVE	SOUTH	3	N	5	334
SW_220	COLUMBIA AVE	2ND ST E	E 3RD ST	EAST	2	N	5	329
SW_221	2ND ST E	MONTANA AVE	COLORADO AVE	NORTH	2	N	5	324
SW_222	MONTANA AVE	2ND ST E	E 3RD ST	WEST	4	N	5	309
SW_223	MONTANA AVE	E 3RD ST	E 4TH ST	WEST	2	N	5	154
SW_224	E 4TH ST	MONTANA AVE	COLORADO AVE	SOUTH	2	N	5	328
SW_225	COLUMBIA AVE	E 3RD ST	E 4TH ST	EAST	2	N	5	335
SW_226	E 3RD ST	MONTANA AVE	COLORADO AVE	NORTH	3	N	5	329
SW_227	E 6TH ST	MONTANA AVE	COLORADO AVE	SOUTH	3	N	5	330
SW_228	COLUMBIA AVE	E 5TH ST	E 6TH ST	EAST	4	N	5	334
SW_229	E 5TH ST	MONTANA AVE	COLORADO AVE	NORTH	3	N	5	325
SW_230	E 6TH ST	MONTANA AVE	COLORADO AVE	NORTH	3	N	5	326
SW_231	COLUMBIA AVE	E 6TH ST	E 7TH ST	EAST	4	N	5	326
SW_232	E 7TH ST	MONTANA AVE	E COLORADO AVE	SOUTH	4	N	5	331
SW_233	MONTANA AVE	E 7TH ST	E 8TH ST	WEST	4	N	5	330
SW_234	E 7TH ST	MONTANA AVE	E COLORADO AVE	NORTH	4	N	5	348
SW_235	E 8TH ST	MONTANA AVE	E COLORADO AVE	SOUTH	3	N	5	342

SW_236	E 9TH ST	MONTANA AVE	E COLORADO AVE	SOUTH	4	N	4	342
SW_237	E 8TH ST	MONTANA AVE	E COLORADO AVE	NORTH	4	N	5	336
SW_238	E 9TH ST	COLUMBIA AVE	MONTANA AVE	NORTH	4	N	5	334
SW_239	E 9TH ST	COLUMBIA AVE	MONTANA AVE	SOUTH	3	N	5	338
SW_240	MONTANA AVE	E 8TH ST	E 9TH ST	EAST	4	N	4	349
SW_241	E 8TH ST	COLUMBIA AVE	MONTANA AVE	NORTH	4	N	4	333
SW_242	E 8TH ST	COLUMBIA AVE	MONTANA AVE	SOUTH	2	N	5	334
SW_243	MONTANA AVE	E 7TH ST	E 8TH ST	EAST	3	N	4	316
SW_244	E 7TH ST	COLUMBIA AVE	MONTANA AVE	NORTH	3	N	5	328
SW_245	E 7TH ST	COLUMBIA AVE	MONTANA AVE	SOUTH	3	N	5	325
SW_246	E 6TH ST	COLUMBIA AVE	MONTANA AVE	NORTH	2	N	5	324
SW_247	E 6TH ST	COLUMBIA AVE	MONTANA AVE	SOUTH	4	N	4	322
SW_248	MONTANA AVE	E 5TH ST	E 6TH ST	EAST	4	N	5	334
SW_249	E 5TH ST	COLUMBIA AVE	MONTANA AVE	NORTH	3	N	5	326
SW_250	E 5TH ST	COLUMBIA AVE	MONTANA AVE	SOUTH	4	N	5	329
SW_251	MONTANA AVE	E 4TH ST	E 5TH ST	EAST	2	N	5	331
SW_252	E 4TH ST	COLUMBIA AVE	MONTANA AVE	NORTH	3	N	5	326
SW_253	E 4TH ST	COLUMBIA AVE	MONTANA AVE	SOUTH	3	N	5	327
SW_254	MONTANA AVE	E 3RD ST	E 4TH ST	EAST	3	N	5	328
SW_255	E 3RD ST	COLUMBIA AVE	MONTANA AVE	NORTH	3	N	5	325
SW_256	E 3RD ST	COLUMBIA AVE	MONTANA AVE	SOUTH	2	N	5	332
SW_257	MONTANA AVE	2ND ST E	E 3RD ST	EAST	2	N	5	331
SW_258	2ND ST E	COLUMBIA AVE	MONTANA AVE	NORTH	3	N	5	324
SW_259	2ND ST E	COLUMBIA AVE	MONTANA AVE	SOUTH	3	N	5	327
SW_260	MONTANA AVE	E 1ST ST	2ND ST E	EAST	2	N	5	331
SW_261	E 1ST ST			NORTH	2	N	5	322

SW_262	S COLUMBIA AVE	GREEN RIVER RD	SOUTH ST	WEST	2	N	5	2293
SW_263	COLUMBIA AVE	SOUTH ST	2ND ST E	EAST	2	N	5	688
SW_264	S COLUMBIA AVE	GREEN RIVER RD	SOUTH ST	EAST	2	N	5	2101
SW_265	2ND ST E	COLLEGE AVE	COLUMBIA AVE	NORTH	3	N	5	399
SW_266	E 3RD ST	COLLEGE AVE	COLUMBIA AVE	SOUTH	3	N	5	408
SW_267	COLUMBIA AVE	2ND ST E	E 3RD ST	EAST	2	N	5	328
SW_268	E 3RD ST	COLLEGE AVE	COLUMBIA AVE	NORTH	3	N	5	58
SW_269	COLUMBIA AVE	E 3RD ST	E 4TH ST	EAST	2	N	4	325
SW_270	E 4TH ST	COLLEGE AVE	COLUMBIA AVE	SOUTH	4	N	4	635
SW_271	E 5TH ST	COLLEGE AVE	COLUMBIA AVE	SOUTH	2	N	4	906
SW_272	COLUMBIA AVE	E 4TH ST	E 5TH ST	EAST	3	N	5	331
SW_273	E 4TH ST	COLLEGE AVE	COLUMBIA AVE	NORTH	3	N	4	700
SW_274	COLLEGE AVE	E 5TH ST	E 7TH ST	WEST	1	Y	5	423
SW_275	COLUMBIA AVE	E 5TH ST	E 7TH ST	EAST	3	N	5	702
SW_276	E 7TH ST	COLLEGE AVE	COLUMBIA AVE	SOUTH	3	N	5	1388
SW_277	COLUMBIA AVE	E 7TH ST	E 8TH ST	EAST	3	N	5	329
SW_278	E 8TH ST	ARIZONA AVE	COLUMBIA AVE	SOUTH	3	N	3	683
SW_279	E 8TH ST	ARIZONA AVE	COLUMBIA AVE	NORTH	4	N	3	683
SW_280	COLUMBIA AVE	E 8TH ST	E 9TH ST	EAST	4	N	4	332
SW_281	COLUMBIA AVE	E 9TH ST	E 10TH ST	EAST	2	N	5	601
SW_282	E 7TH ST	SKYLINE DR	COLLEGE AVE	SOUTH	3	N	5	1392
SW_283	COLLEGE AVE	E 4TH ST	E 7TH ST	EAST	2	N	5	417
SW_284	COLLEGE AVE	E 3RD ST	E 4TH ST	EAST	2	N	5	494
SW_285	E 7TH ST	SKYLINE DR	SKYLINE DR	SOUTH	3	N	5	369
SW_286	E 7TH ST	468TH AVE	SKYLINE DR	SOUTH	3	N	5	468
SW_287	E 7TH ST	MILL SIDE DR	468TH AVE	SOUTH	3	N	5	492
SW_288	E 7TH ST	USTH 59	MILLSIDE	SOUTH	3	N	5	397
SW_289	S COLUMBIA AVE	BROOK ST	GREEN RIVER RD	EAST	2	N	5	323
SW_290	S COLUMBIA AVE	N COURT ST	BROOK ST	EAST	2	N	5	270
SW_291	S COLUMBIA AVE	THOMAS ST	N COURT ST	EAST	2	N	5	631
SW_292	COLLEGE AVE	2ND ST E	S 3RD ST	EAST	2	N	5	395

SW_293	POUGHKEEPSIE AVE	WEST 10TH ST	END OF SIDEWALK	WEST	4	N	5	169
SW_294	W 10TH ST	POUGHKEEPSIE AVE	END OF SIDEWALK	NORTH	4	N	5	172
SW_295	PARK AVE	PACIFIC AVE	PARK LN	WEST	4	N	5	378
SW_296	PACIFIC AVE	W 11TH ST	PARK AVE	WEST	2	N	5	1201
SW_297	W 7TH ST	ATLANTIC AVE	Pacific Ave	NORTH	3	N	5	380
SW_298	W 7TH ST	ATLANTIC AVE	Pacific Ave	SOUTH	3	N	6	386
SW_299	W 6TH ST	ATLANTIC AVE	Pacific Ave	SOUTH	4	N	5	379
SW_300	W 5TH ST	ATLANTIC AVE	Pacific Ave	NORTH	3	N	6	378
SW_301	W 5TH ST	ATLANTIC AVE	Pacific Ave	SOUTH	3	N	6	376
SW_302	GLENDALE ST	END OF SIDEWALK	MEADOW LN	SOUTH	3	N	4	88
SW_303	W 6TH ST	ATLANTIC AVE	Pacific Ave	NORTH	3	N	5	380
SW_304	S COLUMBIA AVE	THOMAS ST	N COURT ST	EAST	2	N	5	631

CURB RAMPS

UID	Intersection	Outlet	Quadrant	Condition	Compliance
PR_001	West 8th st	Wyoming ave	SE	2	N
PR_002	West 8th st	Wyoming Ave	NE	3	N
PR_003	Wyoming Ave	Wyoming Ave	NW	3	N
PR_004	Wyoming Ave	West 8th st	SW	3	N
PR_005	Wyoming Ave	West 8th St.	NW	2	N
PR_006	West 9th St.	Wyoming Ave	SE	1	Y
PR_007	West 9th St.	Wyoming Ave	NW	2	N
PR_008	Park ave	Park Ave	W	2	N
PR_009	Park Ave	Park Ave	W	1	Y
PR_010	West 10th St.	Park Ave	W	1	Y
PR_011	West 10th St.	Park Ave	SE	1	Y
PR_012	Park Ave	West 10th St.	NE	2	N
PR_013	West 10th St.	Park Ave	SW	1	Y
PR_014	Park Ave	West 10th St.	SW	1	Y
PR_015	Park ave	West 10th St.	NW	2	N
PR_016	Park Ave	Park Ave	W	1	Y
PR_017	Park Ave	Park Ave	E	2	N
PR_018	West 11th St.	Idaho Ave	SW	1	Y
PR_019	West 11th St.	Idaho Ave	SE	1	Y
PR_020	Idaho Ave	West 11th St.	SE	1	Y
PR_021	Park Ave	West 11th St.	SW	2	N
PR_022	Park Ave	West 11th St.	NW	1	Y

PR_023	Park Ave	Park Ln	SW	2	N
PR_024	Park Ave	Park Ln	NW	2	N
PR_025	West 11th St.	Albany Ave	SW	3	N
PR_026	Albany Ave	West 11th St.	SW	3	N
PR_027	Scott's Ave	West 11th St.	N	3	N
PR_028	West 11th St.	Scotts Ave	NE	3	N
PR_029	Scott's Ave	West 11th St.	SE	3	N
PR_030	West 11th St.	Scott's Ave	SE	3	N
PR_031	West 10th St.	Albany Ave	NW	3	N
PR_032	Albany Ave	West 10th St.	NW	3	N
PR_033	West 11th St.	Scott's Ave	NE	3	N
PR_034	West 10th St.	Scott's Ave	SE	3	N
PR_035	West 10th St.	Albany Ave	SW	3	N
PR_036	Albany Ave	West 10th St.	SW	3	N
PR_037	Albany Ave	West 10th St.	SE	3	N
PR_038	West 10th St.	Poughkeepsie Ave	NW	3	N
PR_039	Park Ave	Park Ln	NW	2	N
PR_040	Park Ave	Park Ln	SW	2	N
PR_041	Park Ln	Pacific ave	SW	3	N
PR_042	Park ave	Pacific Ave	SE	3	N
PR_043	West 11th St.	Pacific Ave	NW	3	N
PR_044	West 11th St.	Pacific Ave	SW	2	N
PR_045	West 10th St.	Pacific Ave	NW	2	N
PR_046	Pacific Ave	West 10th St.	SW	2	N
PR_047	Pacific Ave	West 9th St.	NW	2	N
PR_048	Pacific Ave	West 9th St.	SW	2	N
PR_049	Pacific Ave	West 8th St.	NW	3	N
PR_050	Pacific Ave	West 9th St.	SW	3	N
PR_051	Nevada Ave	West 8th St.	SE	3	N
PR_052	West 8th St.	Nevada Ave	SE	3	N
PR_053	Nevada Ave	West 9th St.	NE	3	N
PR_054	West 8th St.	Nevada Ave	NE	3	N
PR_055	West 9th St.	Nevada Ave	SE	1	Y
PR_056	Nevada Ave	West 9th St.	SE	1	Y
PR_057	Nevada Ave	West 9th St.	NE	2	N
PR_058	West 9th St.	Nevada Ave	NE	2	N
PR_059	West 9th St.	Nevada Ave	SE	2	N
PR_060	Nevada Ave	West 10th St.	SE	1	Y
PR_061	Nevada Ave	West 10th St.	NE	2	N

PR_062	West 10th St.	Nevada Ave	NE	2	N
PR_063	West 11th St.	Nevada Ave	SE	2	N
PR_064	Nevada Ave	West 11th St.	SE	2	N
PR_065	Nevada Ave	West 11th St.	NE	2	N
PR_066	West 11th St.	Nevada Ave	NE	2	N
PR_067	West 11th St.	Nevada Ave	NW	2	N
PR_068	Nevada Ave	West 11th St.	NW	1	Y
PR_069	Nevada Ave	West 11th St.	SW	2	N
PR_070	West 11th St.	Nevada Ave	SW	2	N
PR_071	West 10th St.	Nevada Ave	NW	2	N
PR_072	Nevada Ave	West 11th St.	NW	1	Y
PR_073	Idaho Ave	West 10th St.	NE	2	N
PR_074	West 10th St.	Idaho Ave	NW	2	N
PR_075	Idaho Ave	West 10th St.	NW	2	N
PR_076	Idaho Ave	West 10th St.	SW	2	N
PR_077	West 10th St.	Idaho Ave	SW	2	N
PR_078	west 10th St.	Idaho Ave	SE	2	N
PR_079	Idaho Ave	West 10th St.	SE	2	N
PR_080	Nevada Ave	West 10th St.	SW	2	N
PR_081	West 10th St.	Nevada Ave	SW	2	N
PR_082	West 9th St.	Nevada Ave	NW	2	N
PR_083	West 9th St.	Nevada Ave	NW	2	N
PR_084	Idaho Ave	West 9th St.	NE	2	N
PR_085	West 9th St.	Idaho Ave	NE	1	Y
PR_086	West 9th St.	Idaho Ave	NW	1	Y
PR_087	Idaho Ave	West 9th St.	NW	2	N
PR_088	Idaho Ave	West 9th St.	SW	1	Y
PR_089	West 9th St.	Idaho Ave	SW	1	Y
PR_090	West 9th St.	Idaho Ave	SE	1	Y
PR_091	West 10th St.	Idaho Ave	NE	2	N
PR_092	Idaho Ave	West 9th St.	SE	1	Y
PR_093	Nevada Ave	West 9th St.	SW	2	N
PR_094	West 9th St.	Nevada Ave	SW	2	N
PR_095	West 8th St.	Nevada Ave	NW	3	N
PR_096	Nevada Ave	West 8th St.	NW	3	N
PR_097	Idaho Ave	West 8th St.	NE	3	N
PR_098	West 8th St.	Idaho Ave	NE	1	N
PR_099	West 8th St.	Idaho Ave	NW	2	N
PR_100	Idaho Ave	West 8th St.	NW	3	N

PR_101	Idaho Ave	West 8th St.	SW	3	N
PR_102	West 8th St.	Idaho Ave	SW	3	N
PR_103	West 8th st	Washington Ave	E	3	N
PR_104	West 8th St.	Washington Ave	W	3	N
PR_105	Washington Ave	West 8th St.	W	3	N
PR_106	West 8th St.	Idaho Ave	SE	3	N
PR_107	Nevada Ave	West 8th St.	SW	3	N
PR_108	West 8th St.	Nevada Ave	SW	3	N
PR_109	West 7th St.	Nevada Ave	NE	3	N
PR_110	Nevada Ave	West 7th St.	NE	3	N
PR_111	Nevada Ave	West 7th St.	SE	3	N
PR_112	West 7th St.	Nevada Ave	SE	3	N
PR_113	West 7th St.	Nevada Ave	NW	3	N
PR_114	Idaho Ave	West 7th St.	NE	3	N
PR_115	West 7th St.	Idaho Ave	NE	3	N
PR_116	West 7th St.	Idaho Ave	NW	3	N
PR_117	Idaho Ave	West 7th St.	NW	3	N
PR_118	West 7th St.	Washington Ave	NE	3	N
PR_119	West 7th St.	Washington Ave	NW	3	N
PR_120	Washington Ave	West 7th St.	NW	3	N
PR_121	Washington Ave	West 7th St.	SW	3	N
PR_122	West 7th St.	Washington Ave	SW	3	N
PR_123	West 7th St.	Washington Ave	SE	3	N
PR_124	Idaho Ave	West 7th St.	SW	3	N
PR_125	West 7th St.	Idaho Ave	SW	3	N
PR_126	West 7th St.	Idaho Ave	SE	3	N
PR_127	Idaho Ave	West 7th St.	SE	3	N
PR_128	West 7th St.	Nevada Ave	SW	3	N
PR_129	Lyndale Ave	Lyndale Ave	W	4	N
PR_130	Sunset Place	West 8th St.	SW	4	N
PR_131	Sunset Place	West 8th St.	SE	4	N
PR_132	West 7th St.	Lyndale Ave	NE	3	N
PR_133	West 7th St.	Wyoming Ave	NW	1	Y
PR_134	Wyoming Ave	West 7th St.	NW	1	Y
PR_135	West 7th St.	Wyoming Ave	NE	2	N
PR_136	West 7th St.	Wyoming Ave	SE	2	N
PR_137	West 7th St.	Wyoming Ave	SW	2	N
PR_138	Wyoming Ave	West 7th St.	SW	1	N
PR_139	West 7th St.	Lyndale Ave	SE	3	N

PR_140	West 6th St.	Lyndale Ave	NE	3	N
PR_141	Weat 6th St.	Wyoming Ave	NW	1	Y
PR_142	West 6th St.	Wyoming Ave	NW	1	N
PR_143	West 6th St.	Wyoming Ave	NE	2	N
PR_144	Washington Ave	West 6th St.	NW	3	N
PR_145	West 6th St.	Washington Ave	NW	3	N
PR_146	West 6th St.	Washington Ave	NE	3	N
PR_147	Idaho Ave	West 6th St.	NW	3	N
PR_148	West 6th St.	Idaho Ave	NW	3	N
PR_149	West 6th St.	Idaho Ave	NE	3	N
PR_150	West 6th St.	Nevada Ave	NE	3	N
PR_151	West 6th St.	Nevada Ave	NE	3	N
PR_152	Nevada Ave	West 6th St.	NE	3	N
PR_153	Nevada Ave	West 6th St.	SE	3	N
PR_154	West 6th St.	Nevada Ave	SE	3	N
PR_155	Nevada Ave	West 6th St.	SW	3	N
PR_156	West 6th St.	Idaho Ave	SE	3	N
PR_157	Idaho Ave	West 6th St.	SW	3	N
PR_158	West 6th St.	Washington Ave	SE	3	N
PR_159	West 6th St.	Washington Ave	SW	3	N
PR_160	Washington Ave	West 6th St.	SW	3	N
PR_161	West 6th St.	Wyoming Ave	SE	2	N
PR_162	West 6th St.	Wyoming Ave	SW	2	N
PR_163	Wyoming Ave	West 6th St.	SW	2	N
PR_164	Wyoming Ave	West 5th St.	NW	2	N
PR_165	West 5th St.	Wyoming Ave	NW	1	Y
PR_166	West 5th St.	Wyoming Ave	NE	1	Y
PR_167	Washington Ave	West 5th St.	NW	1	Y
PR_168	West 5th St.	Washington Ave	NW	1	Y
PR_169	West 5th St.	Washington Ave	NE	1	Y
PR_170	Washington Ave	West 5th St.	NE	1	Y
PR_171	West 5th St.	Idaho Ave	NW	1	Y
PR_172	West 5th St.	Idaho Ave	NE	1	Y
PR_173	Nevada Ave	West 5th St.	NW	1	Y
PR_174	West 5th St.	Nevada Ave	NW	1	Y
PR_175	Nevada Ave	West 5th St.	NE	1	Y
PR_176	Nevada Ave	West 5th St.	NE	2	N
PR_177	Nevada Ave	West 5th St.	SE	1	Y
PR_178	West 5th St.	Nevada Ave	SE	1	N

PR_179	West 5th St.	Nevada Ave	SW	1	Y
PR_180	Nevada Ave	West 5th St.	SW	1	N
PR_181	West 5th St.	Idaho Ave	SE	1	Y
PR_182	West 5th St.	Idaho Ave	SW	1	Y
PR_183	Idaho Ave	West 5th St.	SW	1	Y
PR_184	Washington Ave	West 5th St.	SE	1	Y
PR_185	West 5th St.	Washington Ave	SE	1	Y
PR_186	West 5th St.	Washington Ave	SW	1	Y
PR_187	Washington Ave	West 5th St.	SW	1	Y
PR_188	west 5th St.	Wyoming Ave	SE	1	Y
PR_189	west 5th St.	Wyoming Ave	SW	1	Y
PR_190	Wyoming Ave	West 5th St.	SW	1	Y
PR_191	West 5th St.	lyndale Ave	SE	1	Y
PR_192	West 5th St.	Lyndale Ave	SW	1	Y
PR_193	Nevada Ave	West 4th St.	NE	3	N
PR_194	West Pacific St.	West 5th St.	NW	2	N
PR_195	Pacific Ave	West 5th St.	SW	1	Y
PR_196	west 5th St.	Pacific Ave	SW	3	N
PR_197	Pacific Ave	West 5th St.	NW	3	N
PR_198	West 7th St.	Pacific Ave	SW	3	N
PR_199	west 7th St.	Pacific Ave	NW	3	N
PR_200	East 4th St.	Columbia Ave	NE	4	N
PR_201	Columbia Ave	East 4th St.	NE	3	N
PR_202	east 4th St.	Colombia Ave	SE	3	N
PR_203	east 4th St.	Columbia Ave	SE	3	N
PR_204	East 3rd St.	End of Sidewalk	N	4	N
PR_205	East 3rd St.	Columbia Ave	NE	3	N
PR_206	Columbia Ave	East 3rd St.	NE	3	N
PR_207	East 3rd St.	Columbia Ave	SE	3	N
PR_208	East 3rd St.	Columbia Ave	SE	3	N
PR_209	East 3rd St.	Columbia Ave	SW	3	N
PR_210	East 3rd St.	Columbia Ave	NW	3	N
PR_211	East 4th St.	Columbia Ave	SW	3	N
PR_212	East 4th St.	Columbia Ave	NW	3	N
PR_213	East 5th St.	Columbia Ave	SE	3	N
PR_214	East 5th St.	Columbia Ave	SE	3	N
PR_215	East 5th St.	Columbia Ave	SW	3	N
PR_216	East 5th St.	Columbia Ave	NW	3	N
PR_217	Columbia Ave	East 5th St.	NE	3	N

PR_218	East 5th St.	Columbia Ave	NE	3	N
PR_219	Columbia Ave	Columbia Ave	E	3	N
PR_220	East 6th St.	Columbia Ave	E	4	N
PR_221	East 6th St.	Columbia Ave	SW	3	N
PR_222	East 6th St.	Columbia Ave	NW	3	N
PR_223	East 6th St.	Columbia Ave	E	4	N
PR_224	Columbia Ave	Columbia Ave	E	3	N
PR_225	Columbia Ave	East 7th St.	SE	1	Y
PR_226	East 7th St.	Columbia Ave	SE	1	N
PR_227	East 7th St.	Columbia Ave	SW	1	Y
PR_228	East 7th St.	Columbia Ave	NW	1	N
PR_229	East 7th St.	Columbia Ave	NE	1	Y
PR_230	East 7th St.	Columbia Ave	NE	1	Y
PR_231	East 8th St.	Columbia Ave	SE	4	N
PR_232	Columbia Ave	East 8th St.	SE	2	N
PR_233	East 8th St.	Columbia Ave	SW	3	N
PR_234	East 8th St.	Columbia Ave	NW	3	N
PR_235	East 8th St.	Columbia Ave	NE	4	N
PR_236	Columbia Ave	East 8th St.	NE	2	N
PR_237	East 9th St.	Columbia Ave	SE	3	N
PR_238	East 9th St.	Columbia Ave	SW	3	N
PR_239	East 9th St.	Columbia Ave	NW	3	N
PR_240	East 9th St.	Columbia Ave	NE	3	N
PR_241	Columbia Ave	Columbia Ave	E	3	N
PR_242	Columbia Ave	Columbia Ave	E	2	N
PR_243	Columbia Ave	Columbia Ave	E	3	N
PR_244	East 9th St.	Montana Ave	NE	3	N
PR_245	Montana Ave	East 9th St.	NE	4	N
PR_246	East 9th St.	Montana Ave	NW	3	N
PR_247	East 9th St.	Montana Ave	SW	3	N
PR_248	Montana Ave	East 9th St.	SE	4	N
PR_249	East 9th St.	Montana Ave	SE	3	N
PR_250	Montana Ave	East 8th St.	NE	3	N
PR_251	East 8th St.	Montana Ave	NE	3	N
PR_252	East 8th St.	Montana Ave	NW	3	N
PR_253	Montana Ave	East 8th St.	NW	4	N
PR_254	Montana Ave	East 8th St.	SW	4	N
PR_255	East 8th St.	Montana Ave	SW	3	N
PR_256	East 8th St.	Montana Ave	SE	3	N

PR_257	Montana Ave	East 8th St.	SE	3	N
PR_258	East 7th St.	Montana Ave	NE	1	Y
PR_259	East 7th St.	Montana Ave	NW	1	Y
PR_260	Montana Ave	East 7th St.	NW	1	Y
PR_261	Montana Ave	East 7th St.	NW	1	Y
PR_262	East 7th St.	Montana Ave	SW	1	Y
PR_263	East 7th St.	Montana Ave	SE	1	Y
PR_264	East 6th St.	Montana Ave	NE	4	N
PR_265	Montana Ave	East 6th St.	NE	4	N
PR_266	East 6th St.	Montana Ave	NW	4	N
PR_267	East 6th St.	Montana Ave	SW	3	N
PR_268	East 6th St.	Montana Ave	SE	3	N
PR_269	Montana Ave	East 6th St.	SE	3	N
PR_270	Montana Ave	East 5th St.	NE	4	N
PR_271	East 5th St.	Montana Ave	NE	4	N
PR_272	East 5th St.	Montana Ave	NW	3	N
PR_273	Montana Ave	East 5th St.	NW	3	N
PR_274	Montana Ave	East 5th St.	SW	3	N
PR_275	East 5th St.	Montana Ave	SW	3	N
PR_276	East 5th St.	Montana Ave	SE	4	N
PR_277	Montana Ave	East 5th St.	SE	4	N
PR_278	Montana Ave	East 4th St.	NE	4	N
PR_279	East 4th St.	Montana Ave	NE	3	N
PR_280	East 4th St.	Montana Ave	NW	3	N
PR_281	Montana Ave	East 4th St.	NW	4	N
PR_282	East 4th St.	Montana Ave	SW	3	N
PR_283	East 4th St.	Montana Ave	SE	4	N
PR_284	Montana Ave	East 4th St.	SE	4	N
PR_285	Montana Ave	East 3rd St.	NE	3	N
PR_286	Montana Ave	East 3rd St.	NE	3	N
PR_287	Montana Ave	East 3rd St.	SE	3	N
PR_288	Montana Ave	East 3rd St.	SE	3	N
PR_289	Montana Ave	East 3rd St.	SW	4	N
PR_290	Montana Ave	East 3rd St.	NW	4	N
PR_291	East 9th St.	Colorado Ave	NE	3	N
PR_292	East 9th St.	Colorado Ave	NW	3	N
PR_293	East 9th St.	Colorado Ave	SW	3	N
PR_294	East 9th St.	Colorado Ave	SE	3	N
PR_295	East 8th St.	Colorado Ave	NE	3	N

PR_296	East 8th St.	Colorado Ave	NW	3	N
PR_297	Colorado Ave	East 8th St.	NW	3	N
PR_298	Colorado Ave	East 8th St.	SW	3	N
PR_299	East 8th St.	Colorado Ave	SE	3	N
PR_300	East 8th St.	Colorado Ave	SE	3	N
PR_301	East 7th St.	Colorado Ave	NW	1	Y
PR_302	East 7th St.	Colorado Ave	NW	1	Y
PR_303	East 7th St.	Colorado Ave	NE	1	Y
PR_304	East 7th St.	Colorado Ave	SE	1	Y
PR_305	Colorado Ave	East 7th st	SW	1	N
PR_306	East 7th St.	Colorado Ave	SW	1	Y
PR_307	Colorado Ave	East 6th St.	NW	3	N
PR_308	East 6th St.	Colorado Ave	NW	3	N
PR_309	East 6th St.	Colorado Ave	NE	3	N
PR_310	Colorado Ave	Colorado Ave	NE	3	N
PR_311	Colorado Ave	East 6th St.	SE	3	N
PR_312	East 6th St.	Colorado Ave	SE	3	N
PR_313	East 6th St.	Colorado Ave	SE	3	N
PR_314	Colorado Ave	East 6th St.	SW	3	N
PR_315	East 5th St.	Colorado Ave	NE	3	N
PR_316	Colorado Ave	East 5th St.	NW	3	N
PR_317	East 5th St.	Colorado Ave	NE	3	N
PR_318	Colorado Ave	East 5th St.	NE	3	N
PR_319	Colorado Ave	East 5th St.	S	2	N
PR_320	Colorado Ave	East 5th St.	S	2	N
PR_321	East 5th St.	East 5th St.	S	2	N
PR_322	East 5th St.	East 5th St.	S	2	N
PR_323	East 5th St.	California Ave	SE	3	N
PR_324	East 5th St.	California Ave	SE	3	N
PR_325	East 5th St.	California Ave	SW	3	N
PR_326	East 5th St.	East 5th St.	E	3	N
PR_327	East 5th St.	East 5th St.	W	4	N
PR_328	East 5th St.	California Ave	NE	3	N
PR_329	East 5th St.	California Ave	NE	3	N
PR_330	East 6th St.	California Ave	SE	3	N
PR_331	California Ave	East 6th St.	SE	3	N
PR_332	East 6th St.	California Ave	SW	3	N
PR_333	California Ave	East 6th St.	NW	3	N
PR_334	East 6th St.	California Ave	NE	3	N

PR_335	California Ave	East 6th St.	NE	3	N
PR_336	East 7th St.	California Ave	SE	1	Y
PR_337	California Ave	East 7th St.	SE	1	Y
PR_338	East 7th St.	California Ave	SW	1	Y
PR_339	East 7th St.	California Ave	NW	2	N
PR_340	California Ave	East 7th St.	NW	1	N
PR_341	California Ave	East 7th St.	NE	1	Y
PR_342	East 8th St.	California Ave	SE	1	Y
PR_343	California Ave	East 8th St.	SE	1	Y
PR_344	East 8th St.	California Ave	SW	3	N
PR_345	East 8th St.	California Ave	NW	3	N
PR_346	East 8th St.	California Ave	NE	3	N
PR_347	California Ave	East 9th St.	SE	4	N
PR_348	East 9th St.	California Ave	SE	3	N
PR_349	East 9th St.	California Ave	SW	3	N
PR_350	East 9th St.	California Ave	NW	3	N
PR_351	East 9th St.	California Ave	NE	3	N
PR_352	California Ave	East 9th St.	NE	3	N
PR_353	Colorado Ave	East 3rd St.	SW	4	N
PR_354	East 3rd St.	Colorado Ave	SW	2	N
PR_355	East 3rd st.	Colorado Ave	SE	3	N
PR_356	Colorado Ave	East 3rd St.	SE	3	N
PR_357	Colorado Ave	East 3rd St.	NE	3	N
PR_358	East 3rd St.	Colorado Ave	NE	4	N
PR_359	East 3rd St.	Colorado Ave	NW	3	N
PR_360	Colorado Ave	East 3rd St.	NW	3	N
PR_361	East 4th St.	Colorado Ave	SW	3	N
PR_362	Colorado Ave	East 4th St.	SW	4	N
PR_363	East 4th St.	Colorado Ave	SE	3	N
PR_364	Colorado Ave	East 4th St.	SE	4	N
PR_365	Colorado Ave	East 4th St.	NE	2	N
PR_366	East 4th St.	Colorado Ave	NE	2	N
PR_367	East 4th St.	Colorado Ave	NW	1	Y
PR_368	Colorado Ave	East 4th St.	NW	2	N
PR_369	East 4th St.	California Ave	NE	3	N
PR_370	California Ave	East 4th St.	NE	3	N
PR_371	East 4th St.	California Ave	NW	3	N
PR_372	East 4th St.	California Ave	SW	3	N
PR_373	East 4th St.	California Ave	SE	3	N

PR_374	California Ave	East 4th St.	SE	3	N
PR_375	East 3rd St.	California Ave	NE	3	N
PR_376	California Ave	East 3rd St.	NE	3	N
PR_377	East 3rd St.	California Ave	NW	3	N
PR_378	East 3rd St.	California Ave	SE	3	N
PR_379	East 3rd St.	California Ave	SE	3	N
PR_380	California Ave	East 3rd St.	SE	3	N
PR_381	California Ave	South St.	NW	2	N
PR_382	South St.	California Ave	NE	2	N
PR_383	South St.	California Ave	SE	1	N
PR_384	South St.	California Ave	SW	2	N
PR_385	Oregon Ave	South St	SE	1	Y
PR_386	South St.	Oregon Ave	SE	1	Y
PR_387	South St.	S Oregon Ave	SW	1	Y
PR_388	South St.	Oregon Ave	NE	1	Y
PR_389	Oregon Ave	South St.	NE	1	Y
PR_390	South St.	Oregon Ave	NW	1	Y
PR_391	S Oregon Ave	Pine st	N	2	N
PR_392	S Oregon Ave	Pine st	S	2	Y
PR_393	Elm St.	S Oregon Ave	E	2	N
PR_394	California Ave	Ridge Rd	W	2	N
PR_395	California Ave	Ridge Rd	E	2	N
PR_396	S California Ave	Glendale St	NE	1	Y
PR_397	S California Ave	Glendale St	NE	1	Y
PR_398	S California Ave	Pine St	SW	1	Y
PR_399	S California Ave	Pine St	NW	1	Y
PR_400	Meadow Ln	Glendale St	NW	3	N
PR_401	Meadow Ln	Glendale St	SW	3	N
PR_402	Ridge Rd	Meadow Ln	SE	3	N
PR_403	Ridge Rd	Meadow Ln	NE	3	N
PR_404	S California Ave	Meadow Ln	SE	2	N
PR_405	S California Ave	Meadow Ln	NE	2	N
PR_406	Meadow Ln	S California Ave	SE	2	N
PR_407	Meadow Ln	S California Ave	NE	2	N
PR_408	South St.	Colorado Ave	NW	1	Y
PR_409	South St.	Colorado Ave	NE	1	Y
PR_410	South Ave	Montana Ave	SW	1	Y
PR_411	South Ave	Montana Ave	SE	1	Y
PR_412	South ave	South Ave	S	1	Y

PR_413	South ave	South Ave	N	1	Y
PR_414	South St.	Columbia Ave	NW	1	Y
PR_415	South St.	Columbia Ave	NW	1	Y
PR_416	South St.	Columbia Ave	SW	1	Y
PR_417	South St.	Columbia Ave	SE	3	N
PR_418	South St.	Columbia Ave	NE	3	N
PR_419	East 1st St.	Columbia Ave	SW	3	N
PR_420	East 1st St.	Columbia Ave	NW	3	N
PR_421	East 2nd st	Columbia Ave	SE	2	N
PR_422	East 2nd st	Columbia Ave	SE	2	N
PR_423	East 2nd st	Columbia Ave	SW	2	N
PR_424	East 2nd St.	Columbia Ave	NW	3	N
PR_425	East 2nd St.	Columbia Ave	NE	3	N
PR_426	East 2nd St.	Columbia Ave	NE	3	N
PR_427	Montana Ave	East 2nd st	NE	2	N
PR_428	East 2nd St.	Montana Ave	NE	2	N
PR_429	East 2nd St.	Montana Ave	NW	2	N
PR_430	East 2nd St.	Montana Ave	SW	1	Y
PR_431	East 2nd St.	Montana Ave	SE	2	N
PR_432	Montana Ave	East 2nd st	SE	2	N
PR_433	Montana ave	East 1st St.	NE	3	N
PR_434	East 1st St.	Montana Ave	NE	3	N
PR_435	East 1st St.	Montana Ave	NW	4	N
PR_436	Montana ave	East 1st St.	NW	4	N
PR_437	Colorado Ave	East 1st St.	NE	3	N
PR_438	East 1st St.	Columbia Ave	NE	3	N
PR_439	East 1st St.	Columbia Ave	NW	4	N
PR_440	East 1st St.	Columbia Ave	SW	3	N
PR_441	East 1st St.	Columbia Ave	SE	4	N
PR_442	Colorado Ave	East 1st St.	SE	4	N
PR_443	East 2nd St.	Colorado Ave	SE	2	N
PR_444	East 2nd St.	Colorado Ave	SW	2	N
PR_445	Colorado Ave	East 2nd St.	SE	2	N
PR_446	Colorado Ave	East 2nd St.	NE	2	N
PR_447	East 2nd St.	Colorado Ave	NE	2	N
PR_448	East 2nd St.	Colorado Ave	NW	1	Y
PR_449	California Ave	East 2nd St.	NE	2	N
PR_450	California Ave	East 2nd St.	SE	2	N
PR_451	East 2nd St.	California Ave	NE	2	N

PR_452	East 2nd St.	California Ave	NW	2	N
PR_453	California Ave	East 2nd St.	SW	1	Y
PR_454	California Ave	East 2nd St.	NE	1	Y
PR_455	East 2nd St.	California Ave	SW	2	N
PR_456	East 1st St.	California Ave	NE	3	N
PR_457	California Ave	East 1st St.	NE	3	N
PR_458	California Ave	East 1st St.	SE	3	N
PR_459	East 1st St.	California Ave	SE	3	N
PR_460	East 1st St.	California Ave	SW	3	N
PR_461	California Ave	East 1st St.	SW	3	N
PR_462	California Ave	East 1st St.	NW	3	N
PR_463	East 1st St.	California Ave	NW	3	N
PR_464	Oregon Ave	East 1st St.	NE	1	Y
PR_465	East 1st St.	Oregon Ave	NE	1	Y
PR_466	Oregon Ave	East 1st St.	SE	1	Y
PR_467	East 1st St.	Oregon Ave	SE	1	Y
PR_468	East 1st St.	Oregon Ave	SW	1	Y
PR_469	Oregon Ave	East 1st St.	SW	1	Y
PR_470	Oregon Ave	East 1st St.	NW	1	Y
PR_471	East 1st St.	Oregon Ave	NW	1	Y
PR_472	Oregon Ave	East 2nd St.	SW	1	Y
PR_473	East 2nd St.	Oregon Ave	SE	1	Y
PR_474	East 2nd St.	Oregon Ave	SW	1	Y
PR_475	Oregon Ave	East 2nd St.	SE	1	Y
PR_476	Oregon Ave	East 2nd St.	NW	1	Y
PR_477	East 2nd St.	Oregon Ave	NW	1	Y
PR_478	East 2nd St.	Oregon Ave	NE	1	Y
PR_479	Oregon Ave	East 2nd St.	NE	1	Y
PR_480	Oregon Ave	East 3rd St.	SE	1	Y
PR_481	East 3rd St.	Oregon Ave	SE	1	Y
PR_482	East 3rd St.	Oregon Ave	SW	1	Y
PR_483	Oregon Ave	East 3rd St.	SW	1	Y
PR_484	Oregon Ave	East 3rd St.	NW	1	Y
PR_485	East 3rd St.	Oregon Ave	NW	1	Y
PR_486	East 3rd St.	Oregon Ave	NE	1	Y
PR_487	Oregon Ave	East 3rd St.	NE	1	Y
PR_488	Oregon Ave	East 4th St.	SE	2	N
PR_489	East 4th St.	Oregon Ave	SE	2	N
PR_490	East 4th St.	Oregon Ave	SW	2	N

PR_491	Oregon Ave	East 4th St.	SW	2	N
PR_492	Oregon Ave	East 4th St.	NW	2	N
PR_493	East 4th St.	Oregon Ave	NW	2	N
PR_494	East 4th St.	Oregon Ave	NE	2	N
PR_495	Oregon Ave	East 4th St.	NE	2	N
PR_496	Oregon Ave	East 5th St.	SE	2	N
PR_497	East 5th St.	Oregon Ave	SE	2	N
PR_498	East 5th St.	Oregon Ave	SW	2	N
PR_499	East 5th St.	Oregon Ave	NW	2	N
PR_500	Oregon Ave	East 5th St.	NE	2	N
PR_501	5th St.	MN 9	NE	1	Y
PR_502	5th St.	MN 9	NW	1	Y
PR_503	5th St.	MN 9	SW	1	Y
PR_504	5th St.	MN 9	SE	1	Y
PR_505	4th St.	Atlanta Ave	NE	1	Y
PR_506	4th St.	Atlanta Ave	SE	1	Y
PR_507	Atlantic Ave	East 3rd St.	NE	1	Y
PR_508	Atlantic Ave	East 3rd St.	NE	1	Y
PR_509	East 3rd St.	Atlantic Ave	NE	1	Y
PR_510	Atlantic Ave	Atlantic Ave	SW	1	Y
PR_511	Atlantic Ave	Atlantic Ave	NW	1	Y
PR_512	Atlantic Ave	East 2nd St.	NE	1	Y
PR_513	Atlantic Ave	East 2nd St.	SE	1	Y
PR_514	East 1st St.	Atlantic Ave	NE	1	Y
PR_515	Atlantic Ave	East 1st St.	NE	1	Y
PR_516	Atlantic Ave	East 1st St.	SE	1	Y
PR_517	RR Xing	RR Xing	S	2	N
PR_518	S Columbia Ave	Green River Rd	NE	3	N
PR_519	S Columbia Ave	Green River Rd	SE	3	N
PR_520	S Columbia Ave	Brook St.	NE	3	N
PR_521	S Columbia Ave	Brook St.	SE	3	N
PR_522	S Columbia Ave	North Ct	NE	3	N
PR_523	S Columbia Ave	North Ct	SE	3	N
PR_524	S Columbia Ave	South Ct	NE	3	N
PR_525	S Columbia Ave	South Ct	SE	3	N
PR_526	S Columbia Ave	Thomas St	NE	3	N
PR_527	S Columbia Ave	S Columbia Ave	NE	3	N
PR_528	S Columbia Ave	S Columbia Ave	SE	3	N
PR_529	S Columbia Ave	S Columbia Ave	NE	3	N

PR_530	S Columbia Ave	S Columbia Ave	NE	3	N
PR_531	S Columbia Ave	S Columbia Ave	SE	3	N
PR_532	S Columbia Ave	S Columbia Ave	NE	3	N
PR_533	S Columbia Ave	S Columbia Ave	SE	3	N
PR_534	S Columbia Ave	S Columbia Ave	NE	3	N
PR_535	S Columbia Ave	S Columbia Ave	SE	3	N
PR_536	S Columbia Ave	S Columbia Ave	NE	3	N
PR_537	East 9th St.	Oregon Ave	SW	3	N
PR_538	Oregon Ave	East 9th St.	SW	3	N
PR_539	Oregon Ave	East 9th St.	NE	3	N
PR_540	East 9th St.	Oregon Ave	NE	3	N
PR_541	East 9th St.	Oregon Ave	NW	3	N
PR_542	East 9th St.	Alley	NW	3	N
PR_543	E 8th St.	Alley	NE	3	N
PR_544	E 8th St.	Alley	NW	4	N
PR_545	E 8th St.	Alley	SW	4	N
PR_546	East 8th St.	Oregon Ave	NW	3	N
PR_547	East 8th St.	Oregon Ave	NE	3	N
PR_548	Oregon Ave	East 8th St.	NE	3	N
PR_549	Oregon Ave	East 8th St.	SE	3	N
PR_550	East 8th St.	Oregon Ave	SE	3	N
PR_551	East 8th St.	Oregon Ave	SW	4	N
PR_552	East 7th St.	Oregon Ave	NE	1	Y
PR_553	Oregon Ave	East 7th St.	NE	1	Y
PR_554	Oregon Ave	East 7th St.	SE	1	Y
PR_555	East 7th St.	Oregon Ave	SE	1	Y
PR_556	East 7th St.	Oregon Ave	SE	4	N
PR_557	East 7th St.	Oregon Ave	NW	3	N
PR_558	East 6th St.	Oregon Ave	NW	3	N
PR_559	East 6th St.	Oregon Ave	NE	3	N
PR_560	Oregon Ave	East 6th St.	NE	2	N
PR_561	Oregon Ave	East 6th St.	SE	2	N
PR_562	East 6th St.	Oregon Ave	SW	3	N
PR_563	Oregon Ave	East 6th St.	SW	2	N
PR_564	6th St.	MN 9	SE	1	Y
PR_565	6th St.	MN 9	NE	1	Y
PR_566	6th St.	MN 9	NW	1	Y
PR_567	MN 9	6th St.	SW	1	Y
PR_568	6th St.	MN 9	SW	1	Y

PR_569	6th St.	6th St.	N	4	N
PR_570	6th St.	6th St.	N	4	N
PR_571	6th St.	6th St.	S	4	N
PR_572	6th St.	6th St.	S	4	N
PR_573	6th St.	6th St.	S	4	N
PR_574	6th St.	6th St.	S	4	N
PR_575	west 5th St.	Pacific Ave	SE	3	N
PR_576	Pacific Ave	West 5th St.	NE	3	N
PR_577	West Pacific St.	West 5th St.	NE	1	Y
PR_578	7th St.	RR XING	N	1	Y
PR_579	7th St.	RR XING	N	1	Y
PR_580	7th St.	RR XING	S	1	Y
PR_581	7th St.	RR XING	S	1	Y
PR_582	Pacific Ave	West 5th St.	SE	1	Y
PR_583	West 7th St.	Pacific Ave	SE	3	N
PR_584	west 7th St.	Pacific Ave	NE	3	N
PR_585	8th St.	Atlantic Ave	SW	1	Y
PR_586	8th St.	Atlantic Ave	NW	1	Y
PR_587	7th St.	MN 9	NE	1	Y
PR_588	7th St.	MN 9	NW	1	Y
PR_589	7th St.	MN 9	SE	1	Y
PR_590	8th St.	Atlantic Ave	SE	1	Y
PR_591	8th St.	Atlantic Ave	NE	1	Y
PR_592	East 7th St.	East 7th St.	SE	1	Y
PR_593	East 7th St.	East 7th St.	SW	1	Y
PR_594	College Ave	East 7th St.	SW	1	Y
PR_595	College Ave	East 7th St.	SW	2	N
PR_596	College Ave	East 7th St.	SW	1	Y
PR_597	College Ave	East 7th St.	SE	1	Y
PR_598	College Ave	East 7th St.	SW	1	Y
PR_599	College Ave	East 7th St.	SE	1	Y
PR_600	College Ave	East 7th St.	SW	3	N
PR_601	College Ave	East 7th St.	SE	3	N
PR_602	College Ave	East 7th St.	SE	3	N
PR_603	College Ave	East 7th St.	SW	3	N
PR_604	College Ave	East 7th St.	SE	3	N
PR_605	College Ave	East 7th St.	SW	3	N
PR_606	College Ave	East 7th St.	SE	3	N
PR_607	College Ave	East 7th St.	SW	3	N

PR_608	College Ave	College Ave	SW	1	Y
PR_609	College Ave	College Ave	NW	1	Y
PR_610	College Ave	East 5th St.	NW	3	N
PR_611	College Ave	East 5th St.	NE	3	N
PR_612	East 5th St.	College Ave	SE	2	N
PR_613	East 5th St.	College Ave	SW	2	N
PR_614	College Ave	East 4th St.	NE	2	N
PR_615	College Ave	East 4th St.	NW	2	N
PR_616	College Ave	East 4th St.	NW	2	N
PR_617	College Ave	East 4th St.	SW	2	N
PR_618	College Ave	East 4th St.	SW	2	N
PR_619	College Ave	East 4th St.	SE	2	N
PR_620	College Ave	East 4th St.	SE	2	N
PR_621	College Ave	East 3rd St.	NE	2	N
PR_622	College Ave	East 3rd St.	SE	2	N
PR_623	College Ave	East 3rd St.	SW	2	N
PR_624	College Ave	East 2nd St.	NE	2	N
PR_625	College Ave	East 2nd St.	SE	2	N
PR_626	College Ave	East 2nd St.	NW	2	N
PR_627	Arizona Ave	E 8th St.	NW	3	N
PR_628	Arizona Ave	E 8th St.	SW	3	N
PR_629	7th St.	MN 9	SW	1	Y

PEDESTRIAN SIGNALS

UID	Intersection	Quadrant	Condition	Compliance
PS_01	MN9 5th st	NE	1	Y
PS_02	MN9 5th st	NE	1	Y
PS_03	MN9 5th st	NW	1	Y
PS_04	MN9 5th st	NW	1	Y
PS_05	MN9 5th st	SW	1	Y
PS_06	MN9 5th st	SW	2	N
PS_07	MN9 5th st	SE	1	Y
PS_08	MN9 5th st	SE	2	N
PS_09	7th st. MN 9	NW	1	Y
PS_10	7th st. MN 9	NW	1	Y
PS_11	7th st. MN 9	SW	1	Y
PS_12	7th st. MN 9	SW	1	Y

PS_13	7th st. MN 9	SE	1	Y
PS_14	7th st. MN 9	SE	1	Y
PS_15	7th st. MN 9	NE	1	Y
PS_16	7th st. MN 9	NE	1	Y

APPENDIX B – SCHEDULE / BUDGET INFORMATION

COST INFORMATION

UNIT PRICES

Construction costs for upgrading facilities can vary depending on each individual improvement and conditions of each site. Costs can also vary on the type and size of project the improvements are associated with. Listed below are representative 2020 costs for some typical accessibility improvements based on if the improvements are included as part of a retrofit type project, or as part of a larger comprehensive capital improvement project.

Intersection corner ADA improvement retrofit: +/- \$3,000 per ramp

Traffic control signal APS upgrade retrofit: +/- \$ 7,500 per signal leg

Sidewalk / Trail ADA improvement retrofit: +/- \$5.00 per SF

IMPROVEMENT COST

Reconstruct 451 pedestrian ramps:	\$1,353,000
Traffic control signal APS upgrades:	\$15,000
Sidewalk / Trail ADA improvement retrofit (SF):	\$3,184,431
Total:	\$4,552,431

ENTIRE JURISDICTION

Based on the results of the self-evaluation, the estimated costs associated with providing ADA accessibility within the entire jurisdiction is \$4,552,431 regardless of responsible authority. This amount signifies a significant investment that the City of Morris is committed to making in the upcoming years with the assistance of other responsible agencies where applicable. A systematic approach to providing accessibility will be taken in order to absorb the cost into the City budget for improvements to the public right of way.

APPENDIX C – PUBLIC OUTREACH

Insert Summary of Public Outreach here:

Insert Outreach agenda's and sign in info, as well as notification and invite strategy.

APPENDIX D – GRIEVANCE PROCEDURE

As part of the ADA requirements the City has posted the following notice outlining its ADA requirements:

PUBLIC NOTICE

In accordance with the requirements of title II of the Americans with Disabilities Act of 1990, the City of Morris will not discriminate against qualified individuals with disabilities on the basis of disability in the City's services, programs, or activities.

Employment: The City does not discriminate on the basis of disability in its hiring or employment practices and complies with all regulations promulgated by the U.S. Equal Employment Opportunity Commission under title I of the Americans with Disabilities Act (ADA).

Effective Communication: The City will generally, upon request, provide appropriate aids and services leading to effective communication for qualified persons with disabilities so they can participate equally in the City's programs, services, and activities, including qualified sign language interpreters, documents in Braille, and other ways of making information and communications accessible to people who have speech, hearing, or vision impairments.

Modifications to Policies and Procedures: The City will make all reasonable modifications to policies and programs to ensure that people with disabilities have an equal opportunity to enjoy all City programs, services, and activities. For example, individuals with service animals are welcomed in City offices, even where pets are generally prohibited.

Anyone who requires an auxiliary aid or service for effective communication, or a modification of policies or procedures to participate in a City program, service, or activity, should contact the office of the ADA Coordinator, as soon as possible but no later than 48 hours before the scheduled event.

The ADA does not require the City to take any action that would fundamentally alter the nature of its programs or services, or impose an undue financial or administrative burden.

The City will not place a surcharge on a particular individual with a disability or any group of individuals with disabilities to cover the cost of providing auxiliary aids/services or reasonable modifications of policy, such as retrieving items from locations that are open to the public but are not accessible to persons who use wheelchairs.

**City of Morris, MN
Grievance Procedure under
the Americans with Disabilities Act**

This Grievance Procedure is established to meet the requirements of the Americans with Disabilities Act of 1990 ("ADA"). It may be used by anyone who wishes to file a complaint alleging discrimination on the basis of disability in the provision of services, activities, programs, or benefits by the City of Morris. The City's Personnel Policy governs employment-related complaints of disability discrimination.

The complaint should be in writing and contain information about the alleged discrimination such as name, address, phone number of complainant and location, date, and description of the problem. Alternative means of filing complaints, such as personal interviews or a tape recording of the complaint, will be made available for persons with disabilities upon request.

The complaint should be submitted by the grievant and/or his/her designee as soon as possible but no later than 60 calendar days after the alleged violation to:

Morris City Manager

Contact info:

Name: Blaine Hill

Address: 609 Oregon Avenue

PO Box 438

Morris, MN 56267

Phone: 320-589-3141

E-mail: bhill@ci.morris.mn.us

The City will acknowledge receipt of the grievance to the complainant within 15 working days of its submittal. The City will also provide to the complainant within 15 working days of its submittal; 1) a response or resolution to the grievance or; 2) information on when the complainant can expect a response or resolution to the grievance.

If the grievance filed does not concern a City facility, the City will work with the complainant to contact the agency that has jurisdiction.

Within 60 calendar days of receipt, a City of Morris staff person will conduct an investigation necessary to determine the validity of the alleged violation. As a part of the investigation, the staff person would conduct an engineering study to help determine the City's response. The staff person will take advantage of department resources and use engineering judgment, data collected, and any information submitted by the resident to develop a conclusion. A staff person will be available to meet with the complainant to discuss the matter as a part of the investigation and resolution of the matter. The City will document each resolution of a filed grievance and retain such documentation in the department's ADA Grievance File for a period of seven years.

The City will consider all specific grievances within its particular context or setting. Furthermore, the City will consider many varying circumstances including: 1) the nature of the access to services, programs, or facilities at issue; 2) the specific nature of the disability; 3) the essential eligibility requirements for participation; 4) the health and safety of others; and 5) the degree to which an accommodation would constitute a fundamental alteration to the program, service, or facility, or cause an undue hardship to The City of Morris.

Accordingly, the resolution by the City of any one grievance does not constitute a precedent upon which the City is bound or upon which other complaining parties may rely.

File Maintenance

The City shall maintain ADA grievance files for a period of seven years.

Complaints of Title II violations may also be filed with the DOJ within 180 days of the date of discrimination. In certain situations, cases may be referred to a mediation program sponsored by the Department of Justice (DOJ). The DOJ may bring a lawsuit where it has investigated a matter and has been unable to resolve violations.

For more information, contact:

U.S. Department of Justice
Civil Rights Division
950 Pennsylvania Avenue, N.W.
Disability Rights Section - NYAV
Washington, D.C. 20530
www.ada.gov
(800) 514-0301 (voice – toll free)
(800) 514-0383 (TTY)

Title II may also be enforced through private lawsuits in Federal court. It is not necessary to file a complaint with the DOJ or any other Federal agency, or to receive a "right-to-sue" letter, before going to court.

APPENDIX E – CONTACT INFORMATION

ADA TITLE II COORDINATOR

Name: Blaine Hill

Address: 609 Oregon Avenue

PO Box 438

Morris, MN 56267

Phone: 320-589-3141

E-mail: bhill@ci.morris.mn.us

PUBLIC RIGHT OF WAYS ADA IMPLEMENTATION COORDINATOR

Name: Jim Dittbenner

Address: 609 Oregon Avenue

PO Box 438

Morris, MN 56267

Phone: 320-589-1276

E-mail: jdditts@hometownsolutions.net

CITY ENGINEER

Name: Jeff Kuhn, PE

Address: 610 Fillmore Street

Alexandria, MN 56308

Phone: 320-762-8149

E-mail: Jeff.Kuhn@wsn.us.com

APPENDIX F – AGENCY ADA DESIGN STANDARDS AND PROCEDURES

DESIGN PROCEDURES

INTERSECTION CORNERS

Curb ramps or blended transitions will attempt to be constructed or upgraded to achieve compliance within all capital improvement projects. There may be limitations which make it technically infeasible for an intersection corner to achieve full accessibility within the scope of any project. Those limitations will be noted and those intersection corners will remain on the transition plan. As future projects or opportunities arise, those intersection corners shall continue to be incorporated into future work. Regardless on if full compliance can be achieved or not, each intersection corner shall be made as compliant as possible in accordance with the judgment of City staff.

SIDEWALKS / TRAILS

Sidewalks and trails will attempt to be constructed or upgraded to achieve compliance within all capital improvement projects. There may be limitations which make it technically infeasible for segments of sidewalks or trails to achieve full accessibility within the scope of any project. Those limitations will be noted and those segments will remain on the transition plan. As future projects or opportunities arise, those segments shall continue to be incorporated into future work. Regardless on if full compliance can be achieved or not, every sidewalk or trail shall be made as compliant as possible in accordance with the judgment of City staff.

TRAFFIC CONTROL SIGNALS

Traffic control signals will attempt to be constructed or upgraded to achieve compliance within all capital improvement projects. There may be limitations which make it technically infeasible for individual traffic control signal locations to achieve full accessibility within the scope of any project. Those limitations will be noted and those locations will remain on the transition plan. As future projects or opportunities arise, those locations shall continue to be incorporated into future work. Regardless on if full compliance can be achieved or not, each traffic signal control location shall be made as compliant as possible in accordance with the judgment of City staff.

OTHER POLICIES, PRACTICES AND PROGRAMS

Policies, practices and programs not identified in this document will follow the applicable ADA standards.

DESIGN STANDARDS

The City of Morris has PROWAG, as adopted by the Minnesota Department of Transportation (MnDOT), as its design standard. A copy of this document can be found at:

<http://www.dot.state.mn.us/ada/design.html>.

APPENDIX G – GLOSSARY OF TERMS

ABA: See Architectural Barriers Act.

ADA: See Americans with Disabilities Act.

ADA Transition Plan: Mn/DOT's transportation system plan that identifies accessibility needs, the process to fully integrate accessibility improvements into the Statewide Transportation Improvement Program (STIP), and ensures all transportation facilities, services, programs, and activities are accessible to all individuals.

ADAAG: See Americans with Disabilities Act Accessibility Guidelines.

Accessible: A facility that provides access to people with disabilities using the design requirements of the ADA.

Accessible Pedestrian Signal (APS): A device that communicates information about the WALK phase in audible and vibrotactile formats.

Alteration: A change to a facility in the public right-of-way that affects or could affect access, circulation, or use. An alteration must not decrease or have the effect of decreasing the accessibility of a facility or an accessible connection to an adjacent building or site.

Americans with Disabilities Act (ADA): The Americans with Disabilities Act; Civil rights legislation passed in 1990 and effective July 1992. The ADA sets design guidelines for accessibility to public facilities, including sidewalks and trails, by individuals with disabilities.

Americans with Disabilities Act Accessibility Guidelines (ADAAG): contains scoping and technical requirements for accessibility to buildings and public facilities by individuals with disabilities under the Americans with Disabilities Act (ADA) of 1990.

APS: See Accessible Pedestrian Signal.

Architectural Barriers Act (ABA): Federal law that requires facilities designed, built, altered or leased with Federal funds to be accessible. The Architectural Barriers Act marks one of the first efforts to ensure access to the built environment.

Capital Improvement Program (CIP): The CIP for the Transportation Department includes an annual capital budget and a five-year plan for funding the new construction and reconstruction projects on the city's transportation system.

Detectable Warning: A surface feature of truncated domes, built in or applied to the walking surface to indicate an upcoming change from pedestrian to vehicular way.

DOJ: See United States Department of Justice

Federal Highway Administration (FHWA): A branch of the US Department of Transportation that administers the federal-aid Highway Program, providing financial assistance to states to construct and improve highways, urban and rural roads, and bridges.

FHWA: See Federal Highway Administration

Pedestrian Access Route (PAR): A continuous and unobstructed walkway within a pedestrian circulation path that provides accessibility.

Pedestrian Circulation Route (PCR): A prepared exterior or interior way of passage provided for pedestrian travel.

PROWAG: An acronym for the *Guidelines for Accessible Public Rights-of-Way* issued in 2005 by the U. S. Access Board. This guidance addresses roadway design practices, slope, and terrain related to pedestrian access to walkways and streets, including crosswalks, curb ramps, street furnishings, pedestrian signals, parking, and other components of public rights-of-way.

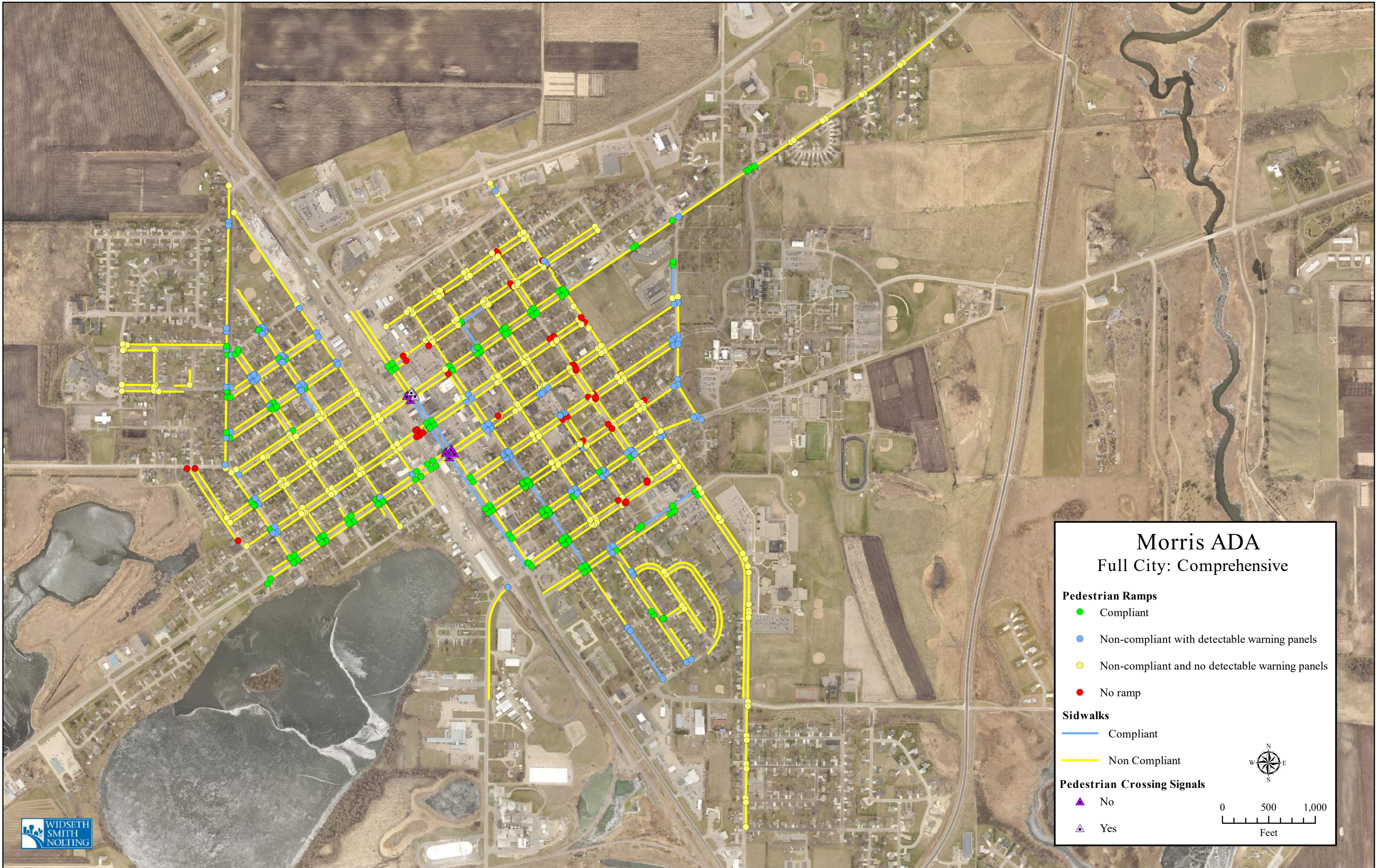
Right of Way: A general term denoting land, property, or interest therein, usually in a strip, acquired for the network of streets, sidewalks, and trails creating public pedestrian access within a public entity's jurisdictional limits.

Section 504: The section of the Rehabilitation Act that prohibits discrimination by any program or activity conducted by the federal government.

Uniform Accessibility Standards (UFAS): Accessibility standards that all federal agencies are required to meet; includes scoping and technical specifications.

United States Access Board: An independent federal agency that develops and maintains design criteria for buildings and other improvements, transit vehicles, telecommunications equipment, and electronic and information technology. It also enforces accessibility standards that cover federally funded facilities.

United States Department of Justice (DOJ): The United States Department of Justice (often referred to as the Justice Department or DOJ), is the United States federal executive department responsible for the enforcement of the law and administration of justice.



Morris ADA Full City: Comprehensive

Pedestrian Ramps

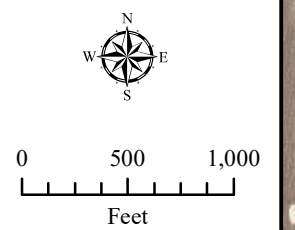
- Compliant
- Non-compliant with detectable warning panels
- Non-compliant and no detectable warning panels
- No ramp

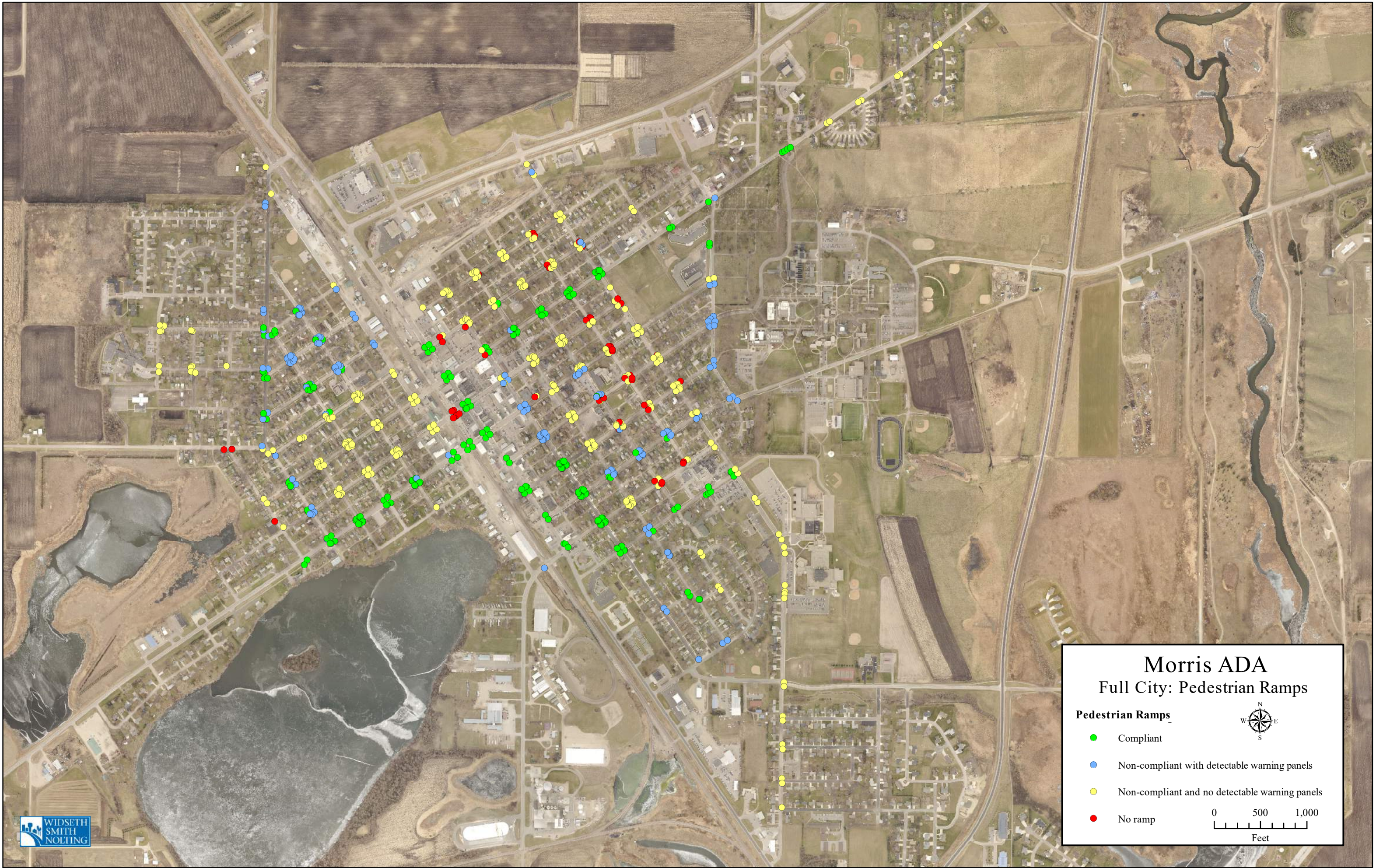
Sidewalks

- Compliant
- Non Compliant

Pedestrian Crossing Signals

- ▲ No
- ▲ Yes



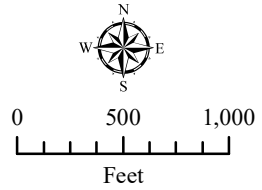


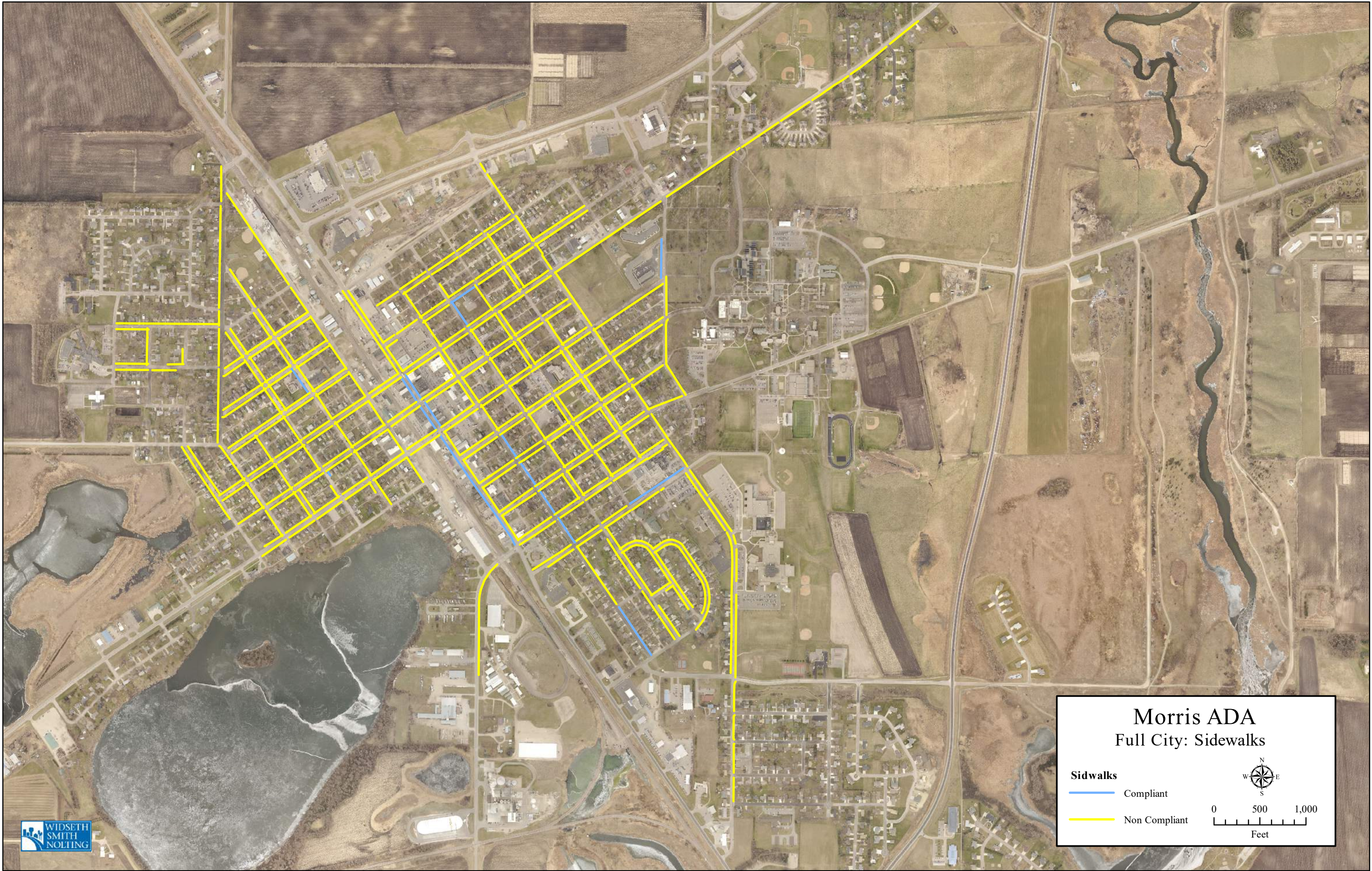


Morris ADA
Full City: Pedestrian Crossing Signals

Pedestrian Crossing Signals


- ▲ Non Compliant
- ▲ Compliant






Morris ADA Full City: Sidewalks

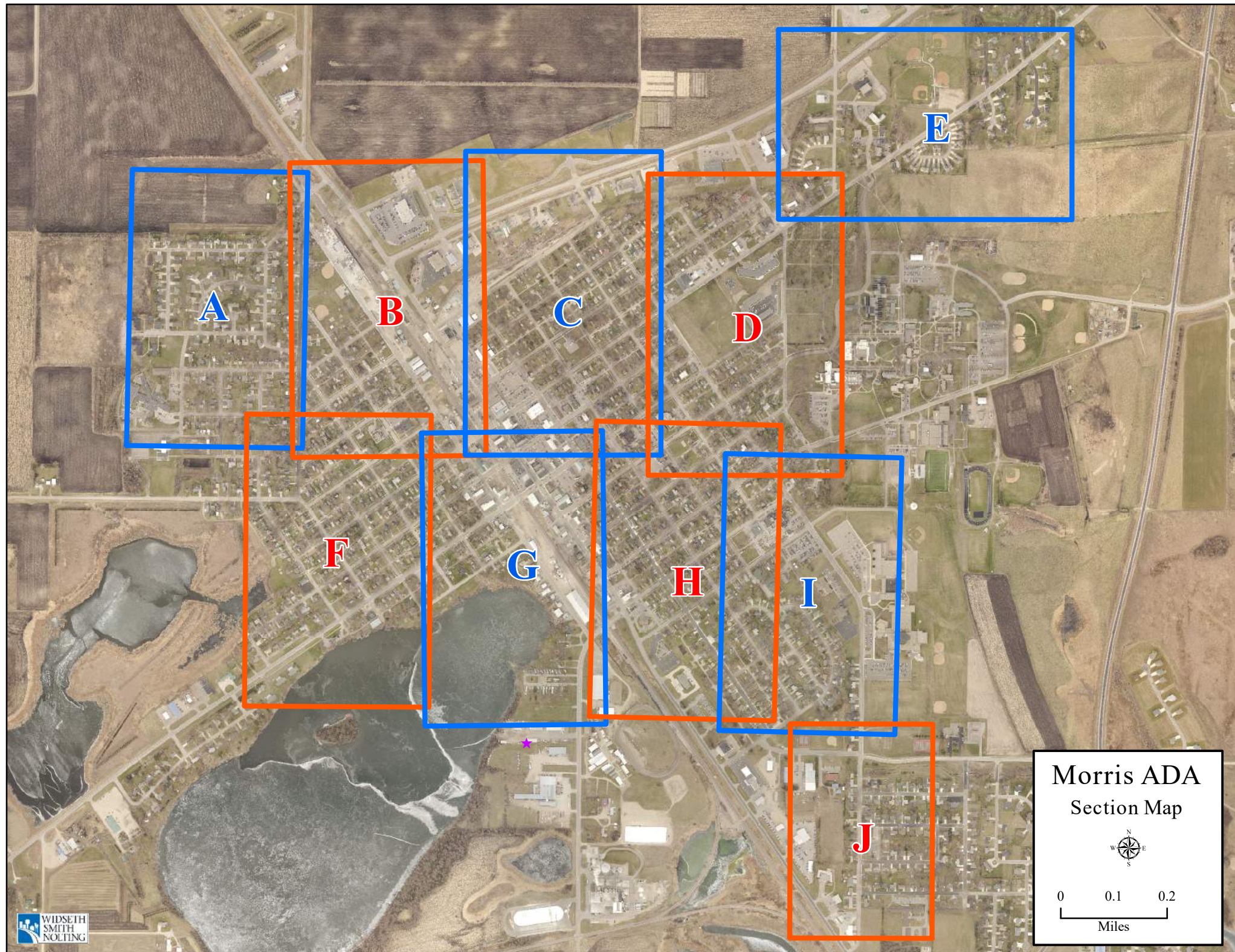
Sidewalks

 Compliant

 Non Compliant



0 500 1,000
Feet



A

B

C

D

E

F

G

H

I

J

Morris ADA
Section Map



0 0.1 0.2
Miles

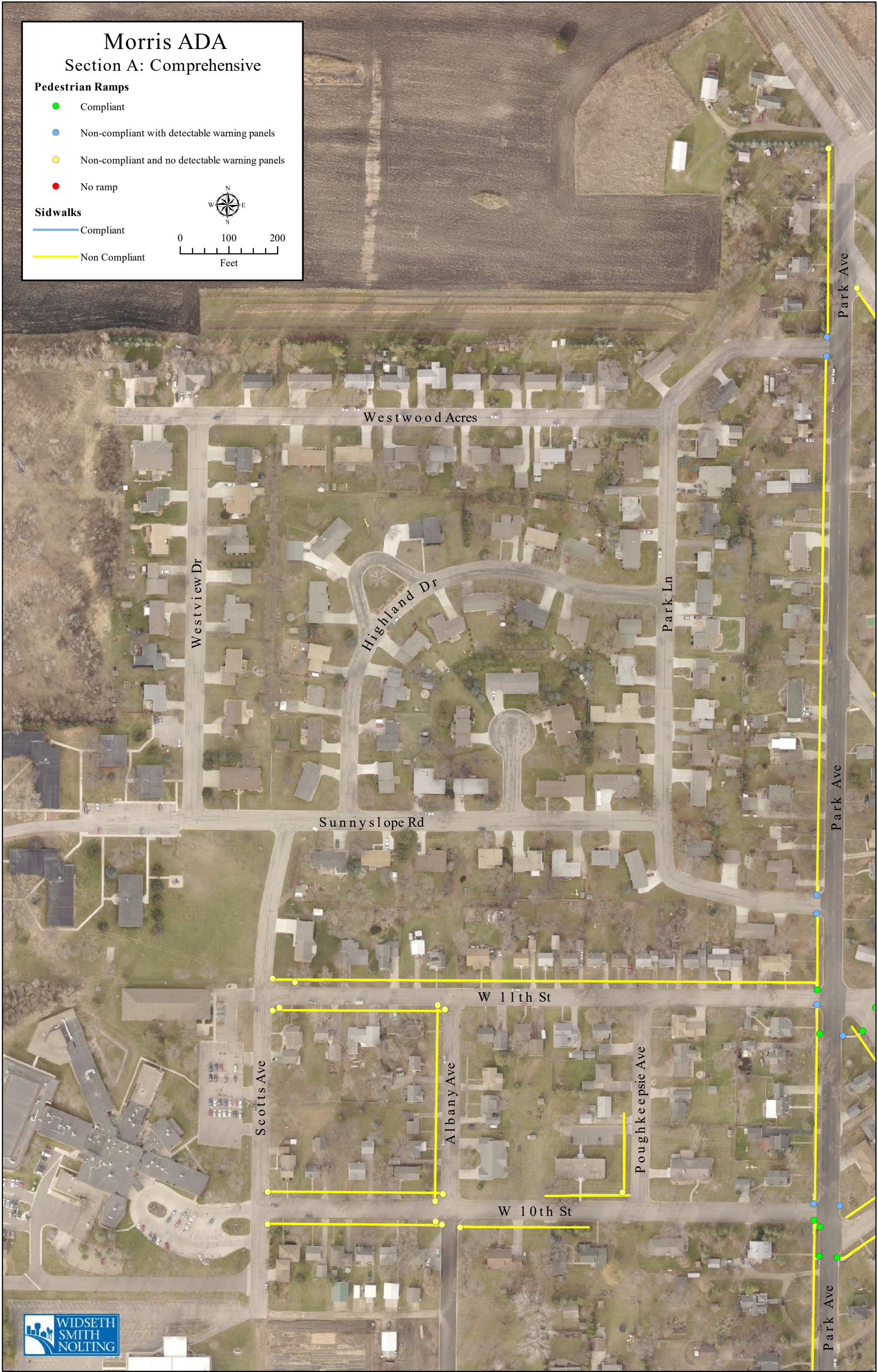
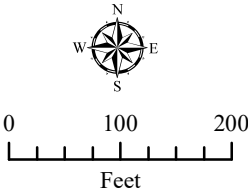
Morris ADA
Section A: Comprehensive

Pedestrian Ramps

- Compliant
- Non-compliant with detectable warning panels
- Non-compliant and no detectable warning panels
- No ramp

Sidewalks

- Compliant
- Non Compliant

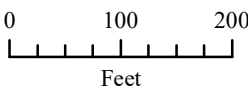


Morris ADA

Section A: Pedestrian Ramps

Pedestrian Ramps

- Compliant
- Non-compliant with detectable warning panels
- Non-compliant and no detectable warning panels
- No ramp

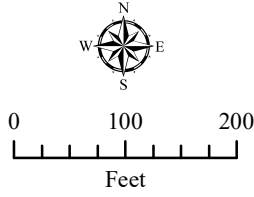


Morris ADA
Section A: Sidewalks

Sidewalks

Compliant

Non Compliant



Morris ADA

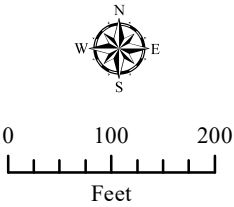
Section B: Comprehensive

Pedestrian Ramps

- Compliant
- Non-compliant with detectable warning panels
- Non-compliant and no detectable warning panels
- No ramp

Sidewalks

- Compliant
- Non Compliant

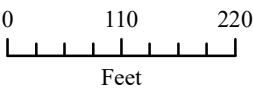


Morris ADA

Section B: Pedestrian Ramps

Pedestrian Ramps

- Compliant
- Non-compliant with detectable warning panels
- Non-compliant and no detectable warning panels
- No ramp



Morris ADA

Section B: Sidewalks

Sidewalks

Compliant

Non Compliant

0

110

220


Feet

N

W

E

S



WIDETH
SMITH
NOLTING

Morris ADA

Section C: Comprehensive

Pedestrian Ramps

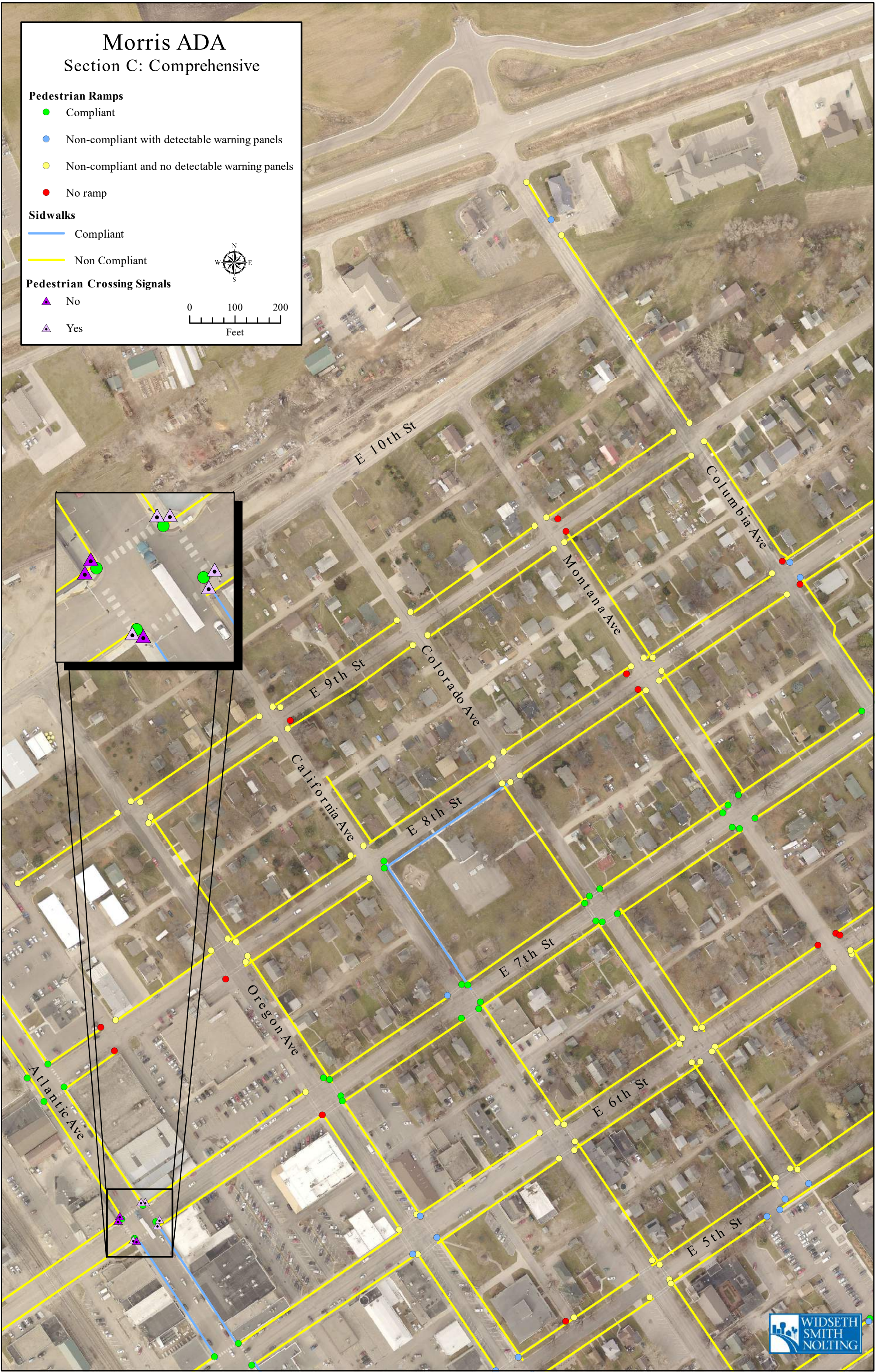
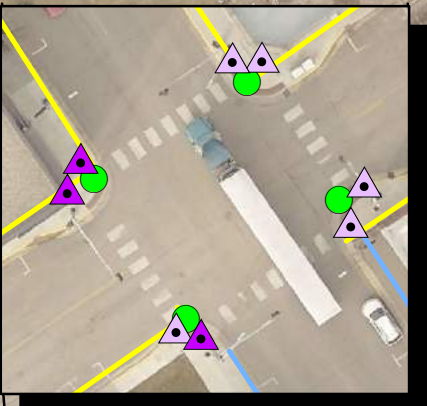
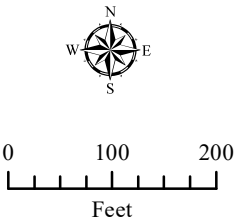
- Compliant
- Non-compliant with detectable warning panels
- Non-compliant and no detectable warning panels
- No ramp

Sidewalks

- Compliant
- Non Compliant

Pedestrian Crossing Signals

- No
- Yes

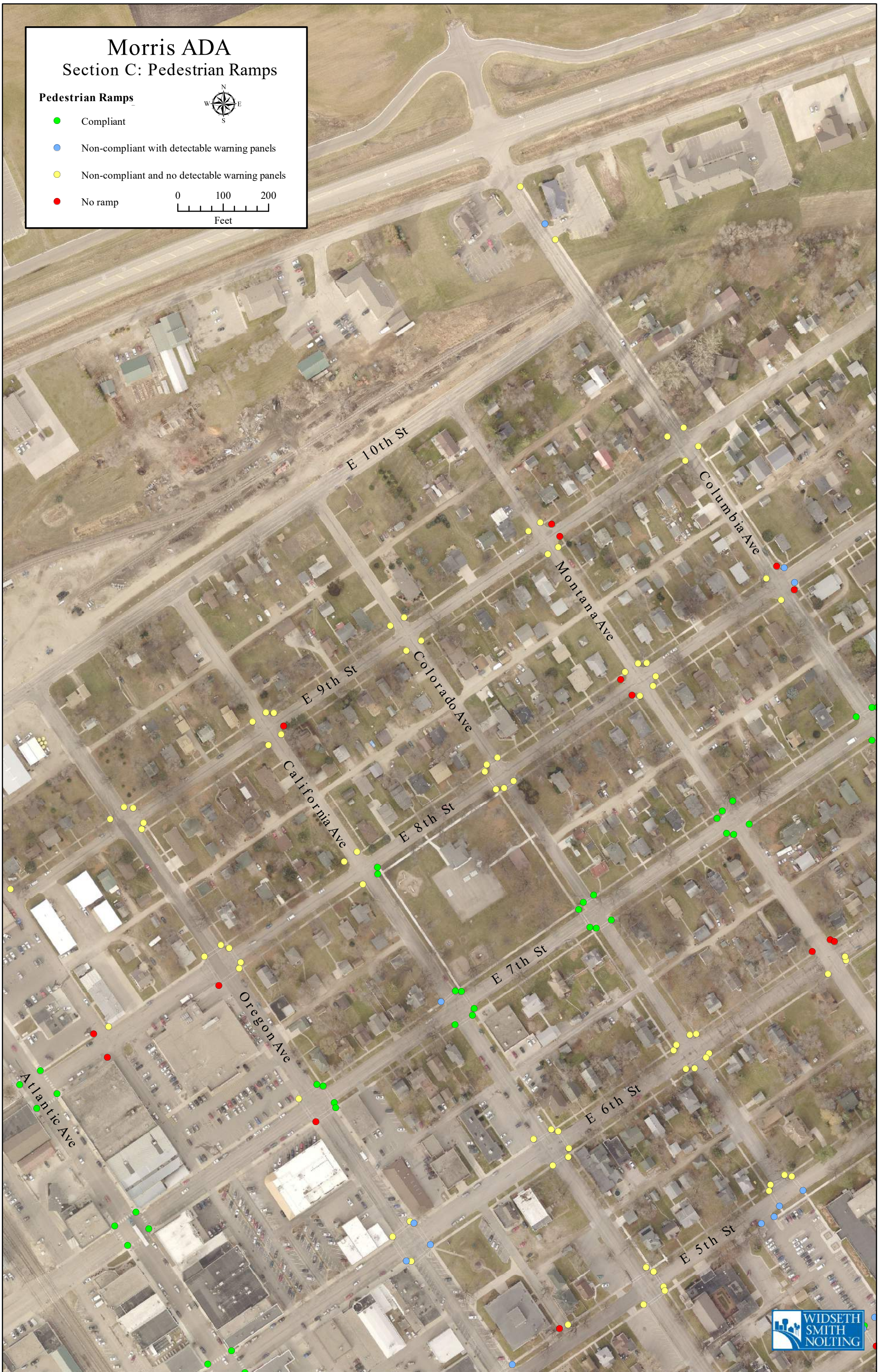
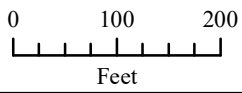


Morris ADA

Section C: Pedestrian Ramps

Pedestrian Ramps

- Compliant
- Non-compliant with detectable warning panels
- Non-compliant and no detectable warning panels
- No ramp

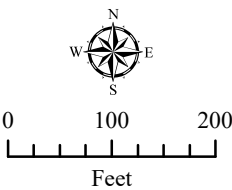


Morris ADA

Section C: Pedestrian Crossing Signals

Pedestrian Crossing Signals

- ▲ Non Compliant
- △ Compliant

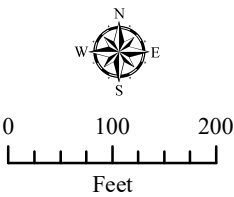


Morris ADA

Section C: Sidewalks

Sidewalks

- Compliant
- Non Compliant



Morris ADA

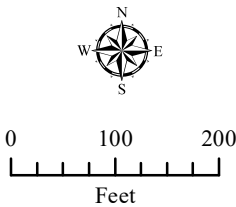
Section D: Comprehensive

Pedestrian Ramps

- Compliant
- Non-compliant with detectable warning panels
- Non-compliant and no detectable warning panels
- No ramp

Sidewalks

- Compliant
- Non Compliant





Morris ADA

Section D: Pedestrian Ramps

Pedestrian Ramps

- Compliant
- Non-compliant with detectable warning panels
- Non-compliant and no detectable warning panels
- No ramp

0100200

Feet

N

W

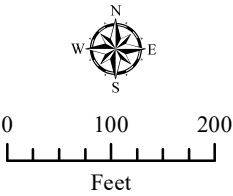
E

S

Morris ADA
Section D: Sidewalks

Sidewalks

- Compliant
- Non Compliant



Morris ADA

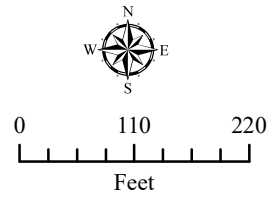
Section E: Comprehensive

Pedestrian Ramps

- Compliant
- Non-compliant with detectable warning panels
- Non-compliant and no detectable warning panels
- No ramp

Sidewalks

- Compliant
- Non Compliant

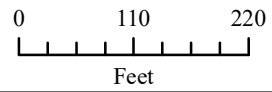


Morris ADA

Section E: Pedestrian Ramps

Pedestrian Ramps

- Compliant
- Non-compliant with detectable warning panels
- Non-compliant and no detectable warning panels
- No ramp

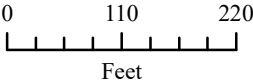


Morris ADA
Section E: Sidewalks

Sidewalks

Compliant

Non Compliant





Morris ADA

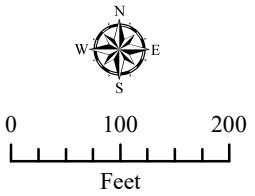
Section F: Comprehensive

Pedestrian Ramps

- Compliant
- Non-compliant with detectable warning panels
- Non-compliant and no detectable warning panels
- No ramp

Sidewalks

- Compliant
- Non Compliant

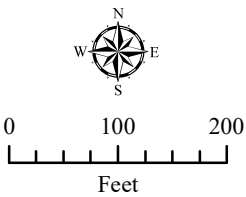


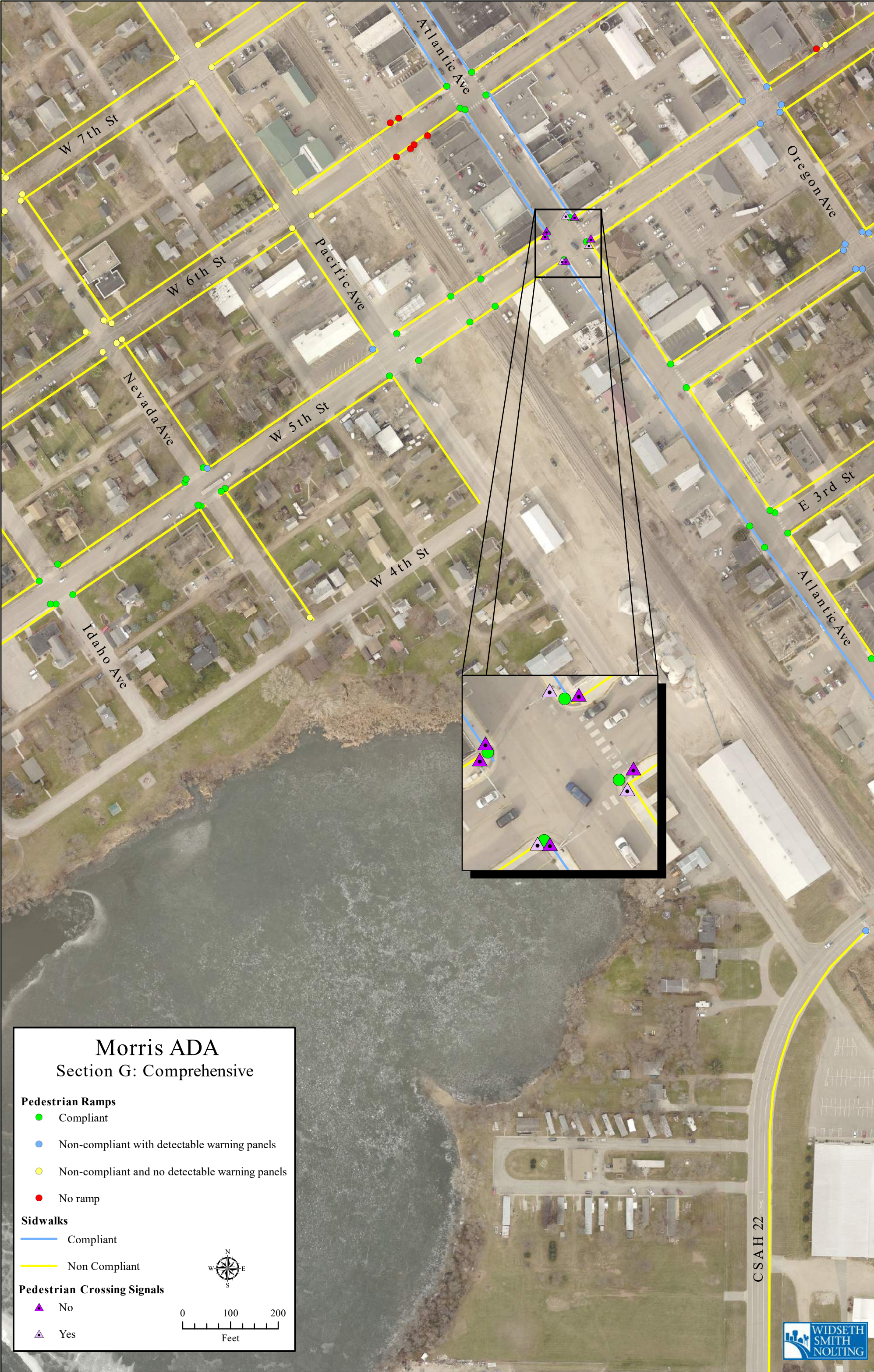


Morris ADA
Section F: Sidewalks

Sidewalks

- Compliant
- Non Compliant





Morris ADA

Section G: Comprehensive

Pedestrian Ramps

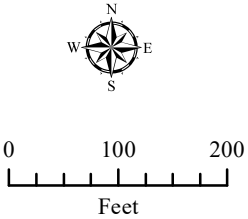
- Compliant
- Non-compliant with detectable warning panels
- Non-compliant and no detectable warning panels
- No ramp

Sidewalks

- Compliant
- Non Compliant

Pedestrian Crossing Signals

- ▲ No
- ▲ Yes

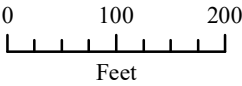




Morris ADA
Section G: Pedestrian Ramps

Pedestrian Ramps

- Compliant
- Non-compliant with detectable warning panels
- Non-compliant and no detectable warning panels
- No ramp



CSAH 22








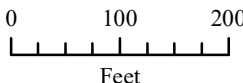
Morris ADA

Section G: Pedestrian Crossing Signals

Pedestrian Crossing Signals

 Non Compliant

 Compliant



Feet



Morris ADA

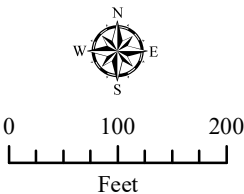
Section H: Comprehensive

Pedestrian Ramps

- Compliant
- Non-compliant with detectable warning panels
- Non-compliant and no detectable warning panels
- No ramp

Sidewalks

- Compliant
- Non Compliant



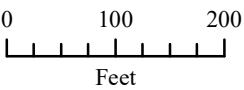


Morris ADA

Section H: Pedestrian Ramps

Pedestrian Ramps

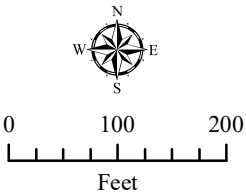
- Compliant
- Non-compliant with detectable warning panels
- Non-compliant and no detectable warning panels
- No ramp



Morris ADA
Section H: Sidewalks

Sidewalks

- Compliant
- Non Compliant



Morris ADA

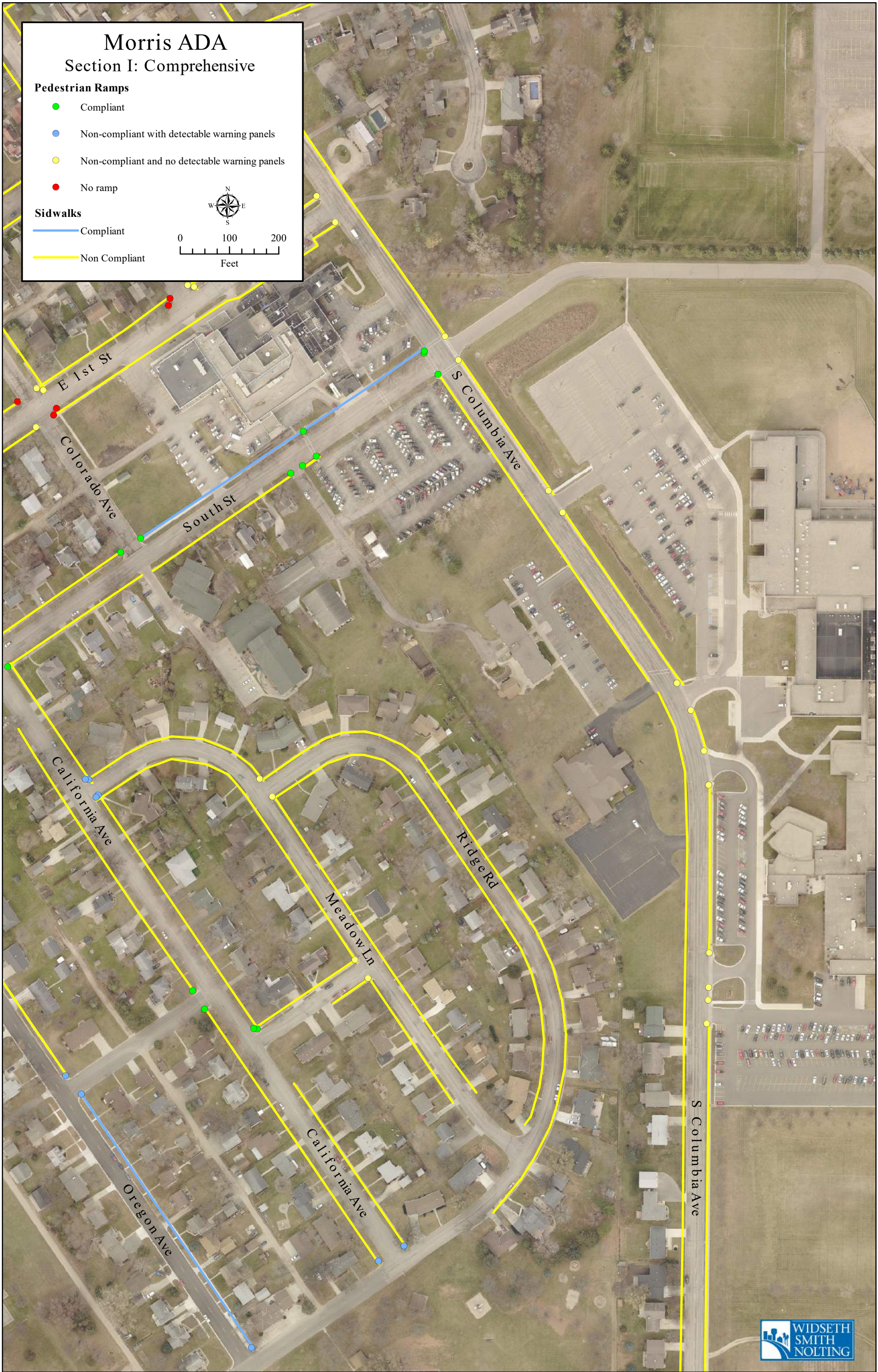
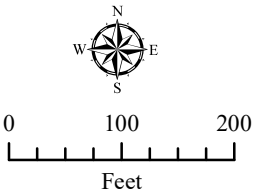
Section I: Comprehensive

Pedestrian Ramps

- Compliant
- Non-compliant with detectable warning panels
- Non-compliant and no detectable warning panels
- No ramp

Sidewalks

- Compliant
- Non Compliant





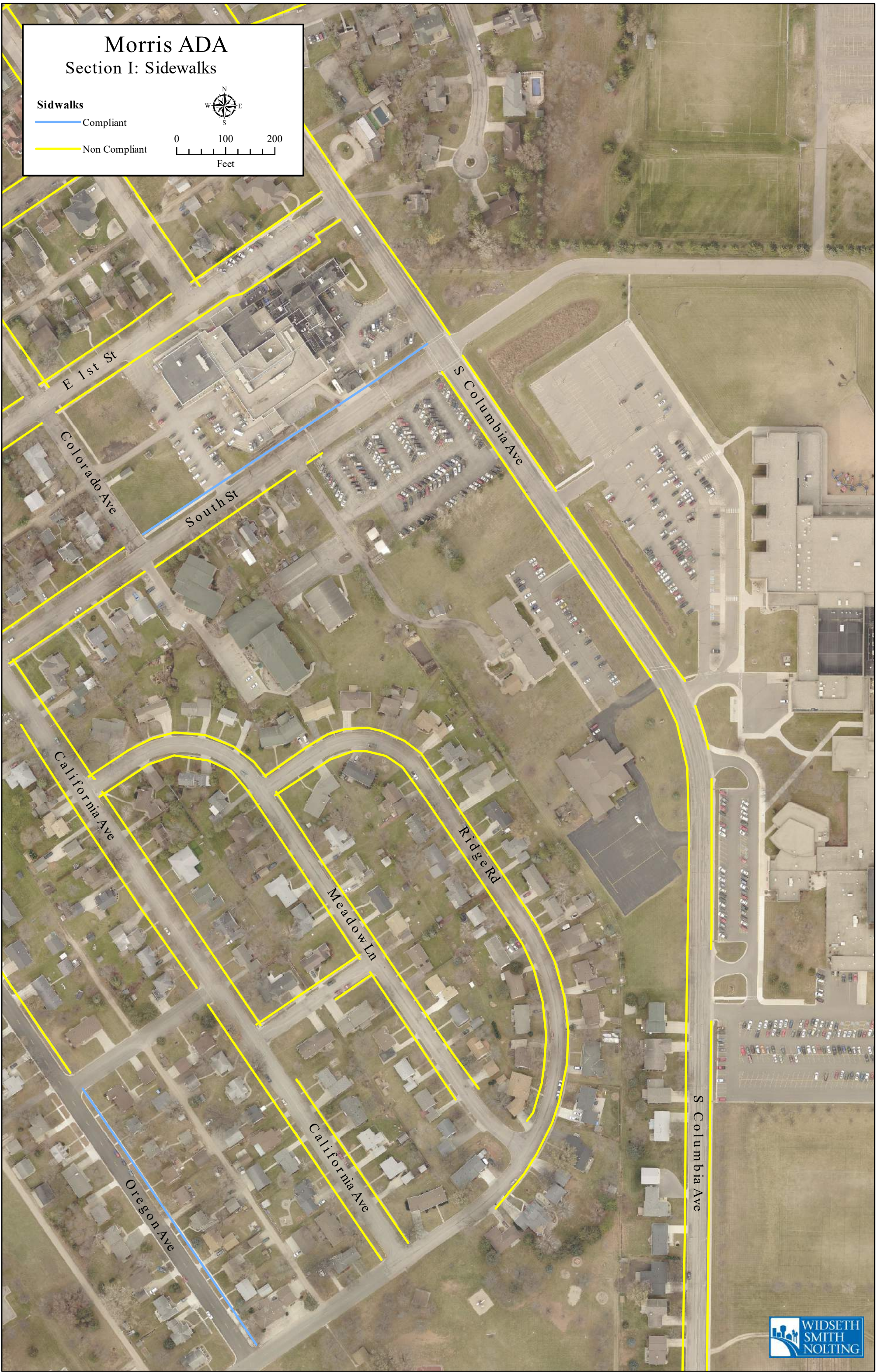
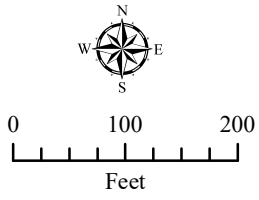
Morris ADA

Section I: Sidewalks

Sidewalks

Compliant

Non Compliant



Morris ADA

Section J: Comprehensive

Pedestrian Ramps

- Compliant
- Non-compliant with detectable warning panels
- Non-compliant and no detectable warning panels
- No ramp

Sidewalks

- Compliant
- Non Compliant

0 80 160
Feet

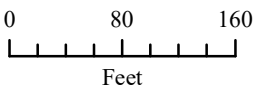


Morris ADA

Section J: Pedestrian Ramps

Pedestrian Ramps

- Compliant
- Non-compliant with detectable warning panels
- Non-compliant and no detectable warning panels
- No ramp

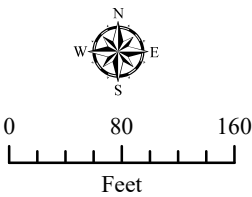


Morris ADA
Section J: Sidewalks

Sidewalks

Compliant

Non Compliant



S Columbia Ave

Green River Rd

Brooke St

N Court St

S Court St

S Court St

S Columbia Ave

Atlantic Ave